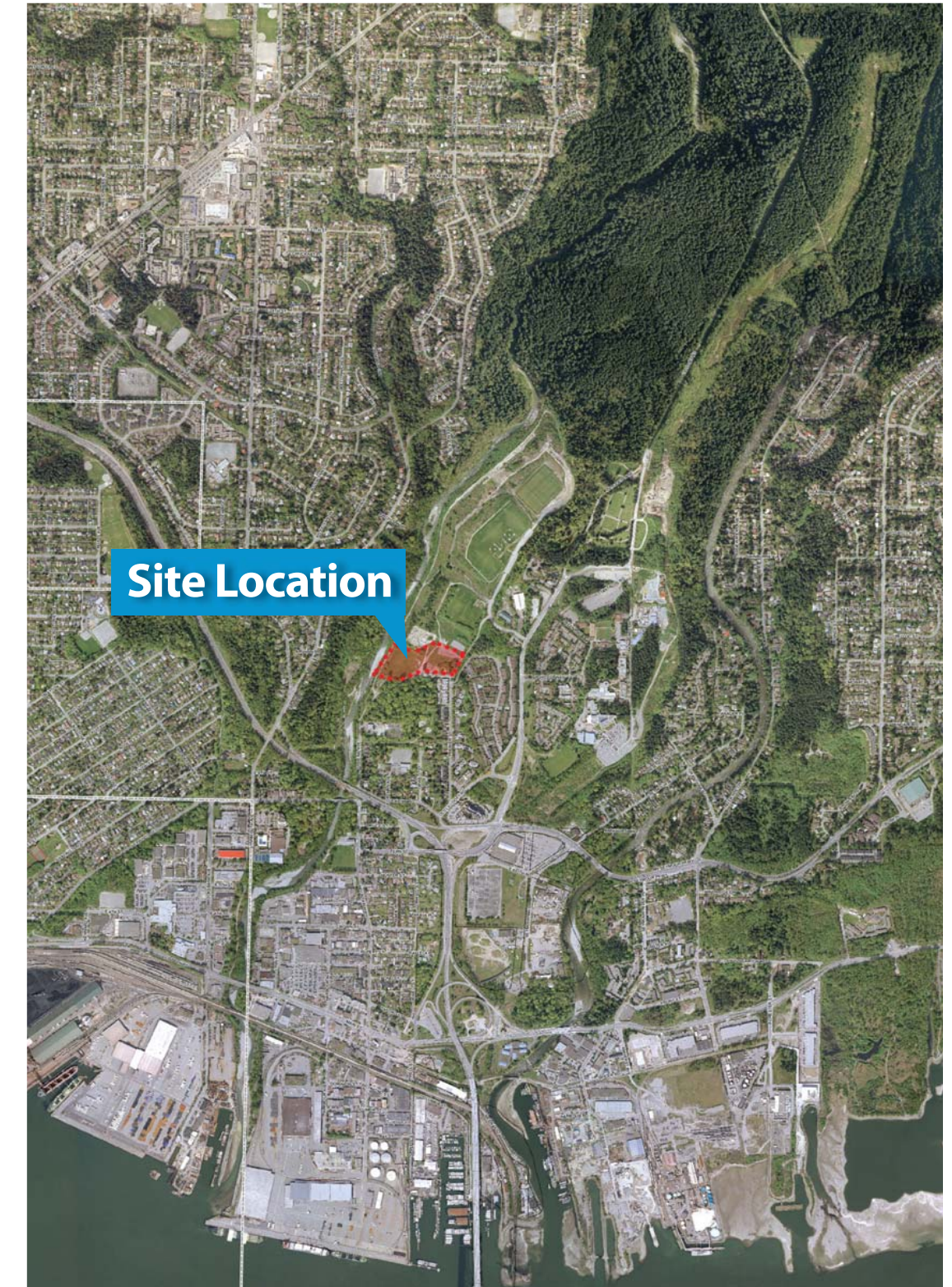
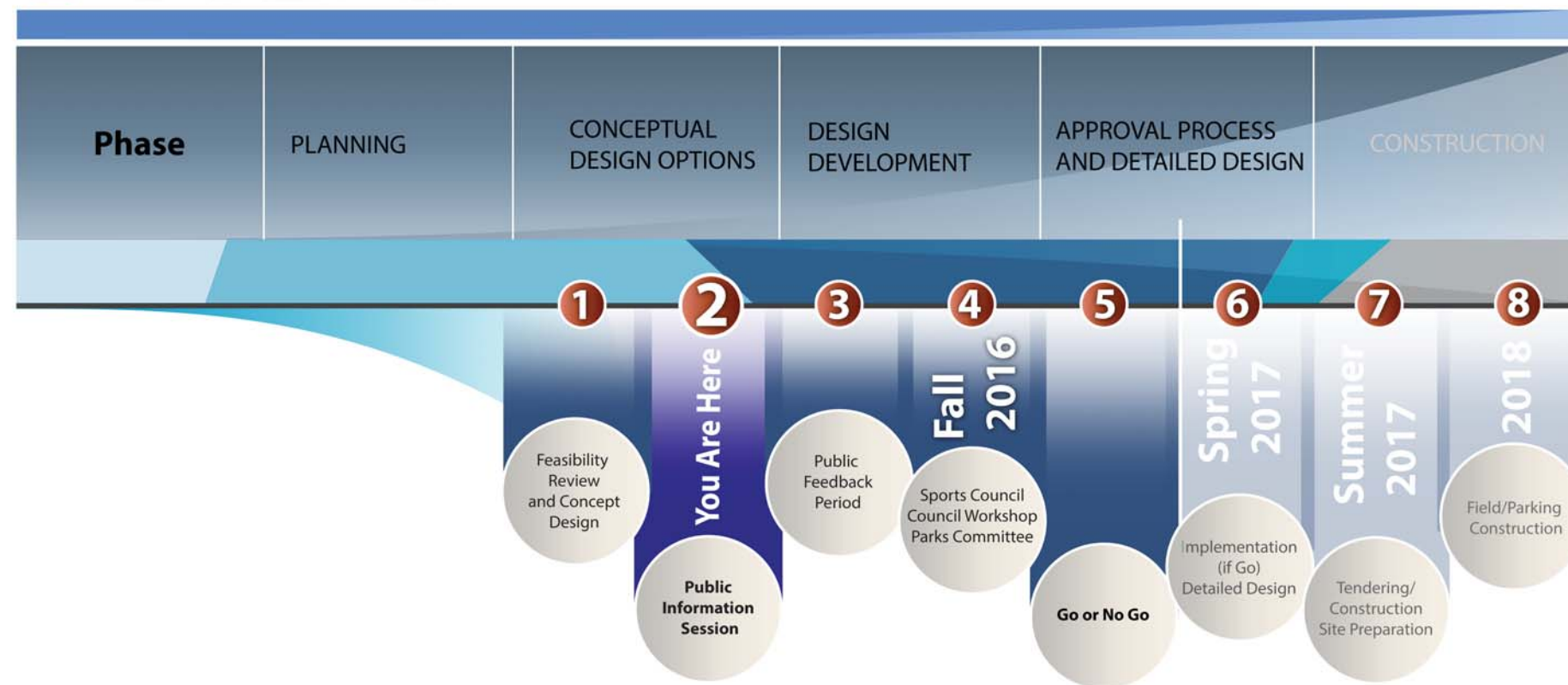


Welcome & Introduction

Inter River Park Sports Field Public Information Session

- Public feedback is critical to planning a successful park!
- Please review the boards and provide your comments and ideas
- Tell us what you like, what you don't like or what is missing
- Fill out a survey from or speak directly with the project team

8 STEPS



Project Background

Study Area

The study area is located at the south end of Inter River Park, and includes Field #1, as well as surrounding wetlands, forests, roads/parking, trails and the District nursery and caretaker's residence.

Intent

The intent of this project is to explore options for providing additional sports field inventory at this location, while minimizing impacts to the environment, adjacent uses and neighbours. Guided by the Inter River Park – Lillooet Park Recreation Use Study, 1995, the park has been developed as a regionally significant, multi-venue athletic facility with multiple sports fields, a lacrosse box and a bike skills park; connected by popular trails with access to adjacent natural features such as Lynn Creek.

Demand for Increased Sports Field Inventory

The existing grass field (Field #1) has been substantially compromised due to settling of the field and associated infrastructure (e.g. backstops and dugouts), largely as a consequence of constructing the field over a former landfill site. The field's uneven surface and associated drainage issues limit the playability and as a result the field is only book occasionally. Compared to other District sports fields, the field is underutilized, un-safe for play, and will require a full restoration to make it suitable to meet its full scheduling capacity.

A new full size (for soccer, football and field hockey) tournament artificial turf field would meet the objective of developing Inter River Park as a DNV tournament center for sports field users, as well as providing additional artificial turf inventory to take the pressure off existing grass fields throughout the District.

A new sand-based natural grass field cannot match the potential user hours of a synthetic grass field but would provide increased sports field availability at Inter River park.

History of Inter River Park

- Landfill from 1956 to 1988
- Soil Disposal site from 1990 to Current
- Park Development Initiated in 1988 – 2009
- Inter River Parks Master Plan approved in 1995
- New sports fields, roadways, parking, trails, Bike Park, Habitat planting and Morten creek enhancement
- Fields 1 – Opened 1988
- Fields 2, 3 – Opened in mid 1990's
- Fields 4, 5, 6 Opened 2005
- Fields 7, 8 Opened 2009



Traffic Analysis

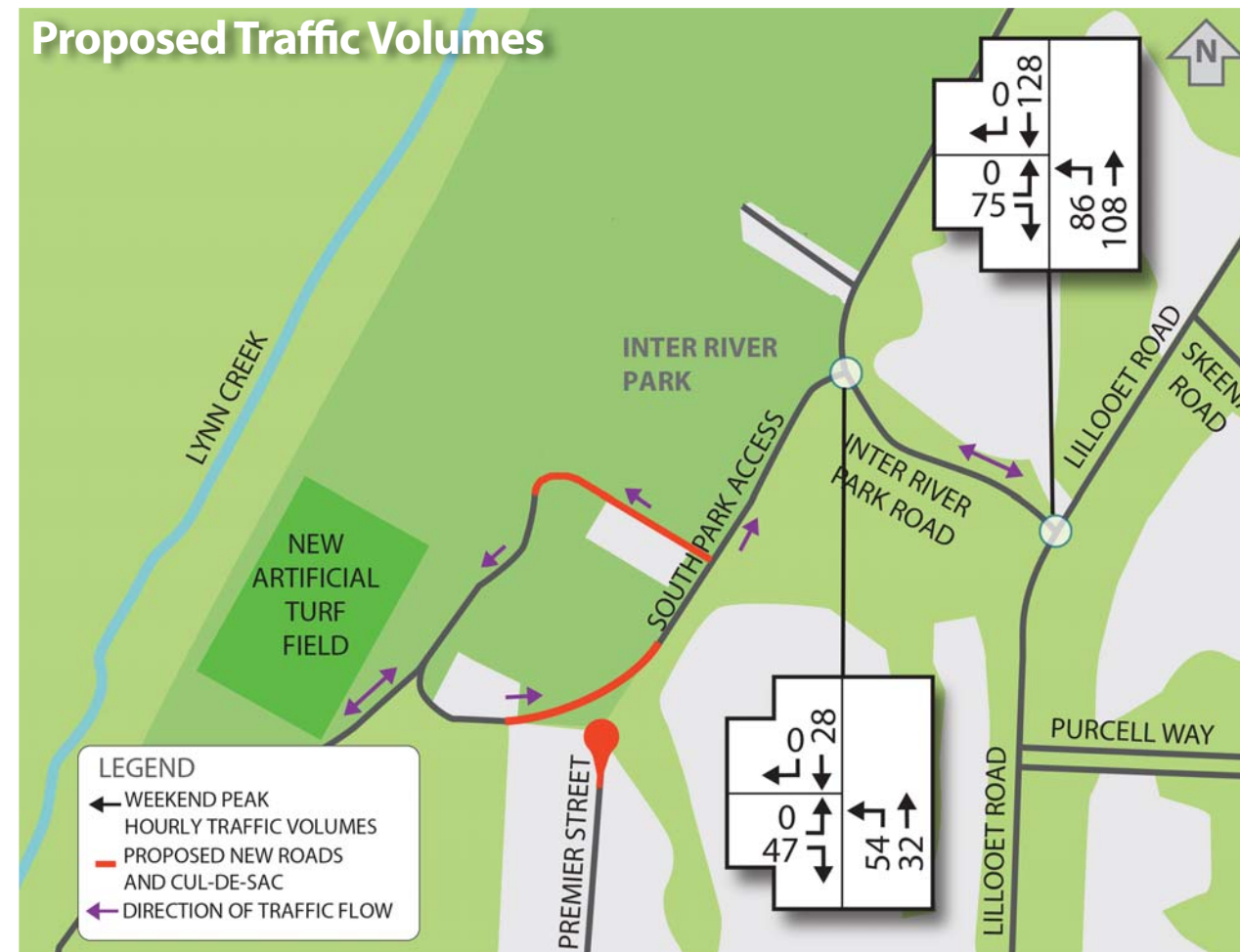
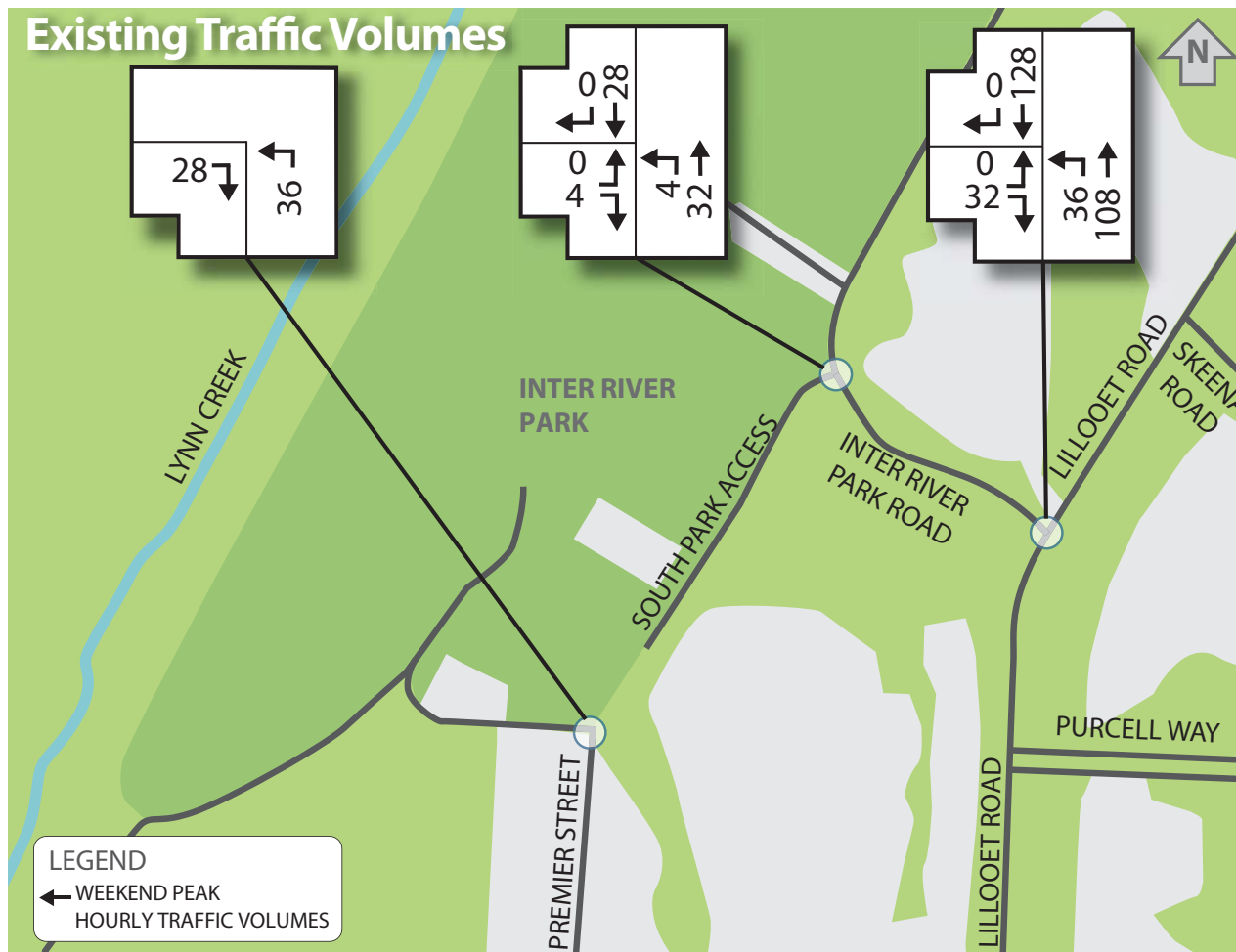
A new road and parking spaces will be built for the users of the new artificial turf field (ATF) and park visitors. Changes to the existing traffic circulation are as follows:

Artificial Turf Field Option

- Access to the park off of Premier Street will be closed to vehicles and a cul-de-sac will be constructed to provide turnaround opportunities. Cyclists and pedestrians will still be able to access the park from Premier Street. There will also be an emergency access at the end of the cul-de-sac with a gate.
- As a result, vehicle access to the park will be provided from Inter River Park Road via Lillooet Road. There will be a one-way circulation loop to provide an efficient traffic flow through the parking areas and minimize vehicle conflicts.

Natural Grass Field Option

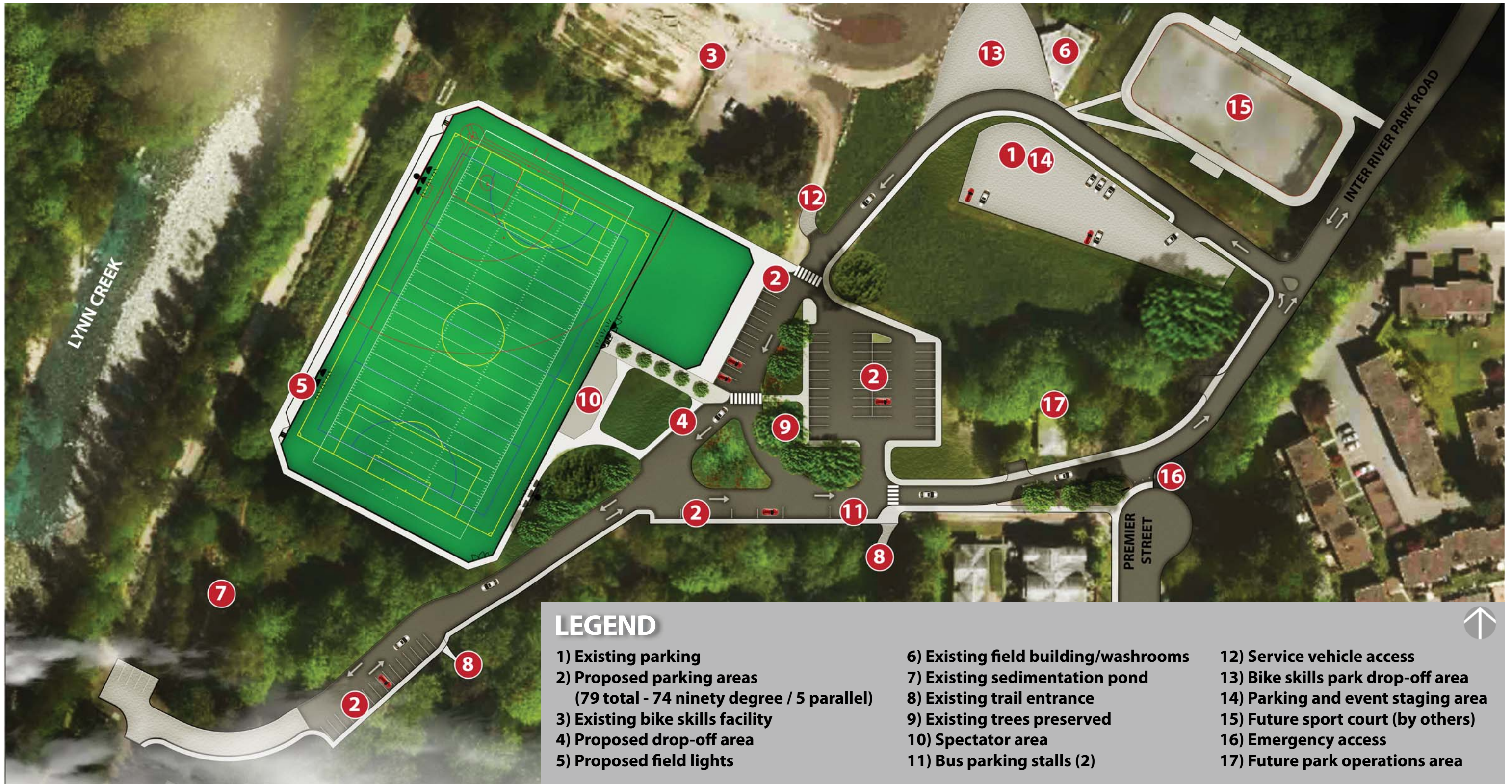
- The upgraded natural grass field will result in limited additional parking demand. The existing gravel access road and parking will be improved but maintained in gravel.



It was estimated that the artificial turf field will generate 29 new vehicle trips during the weekend peak hour, with a peak parking demand of 132 vehicles.

In order to serve pedestrians and cyclists, the access road will be wide enough to support cyclist and vehicular traffic, and sidewalks will be built which tie into existing sidewalks on Inter River Park road.

Artificial Turf Field

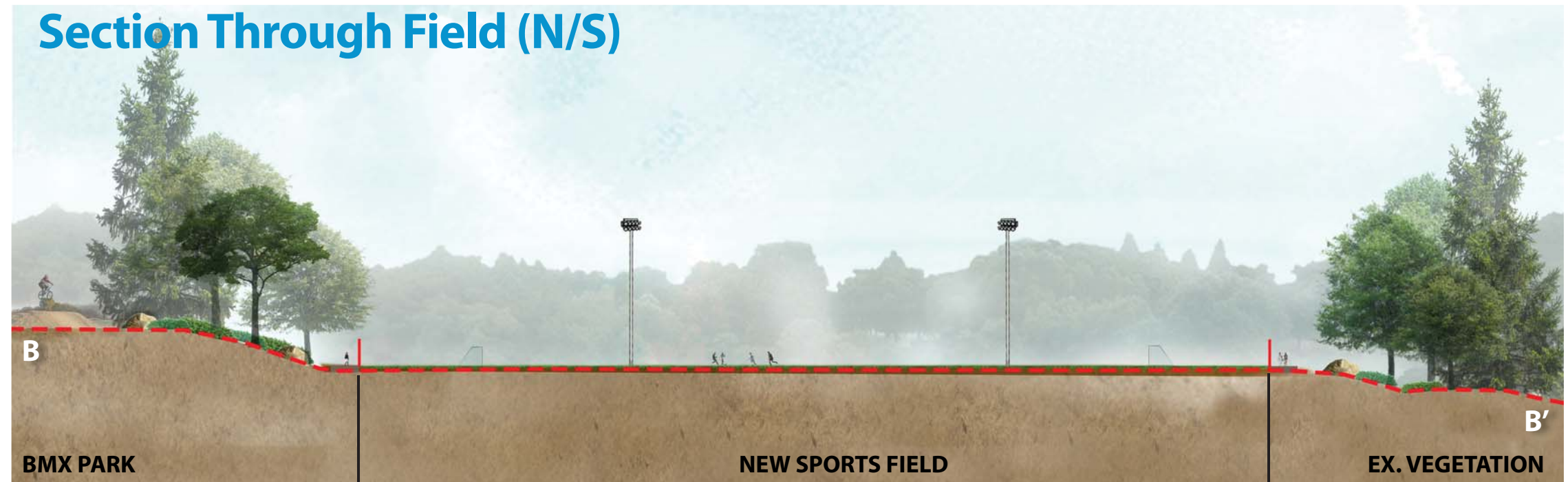


Natural Grass Field



Sections

The proposed field is constrained by Lynn Creek and the existing forest, as illustrated in the sections below.



Precedent Images

Signage



Site Furniture



Green Parking



Environmental Preservation



Sports Facilities



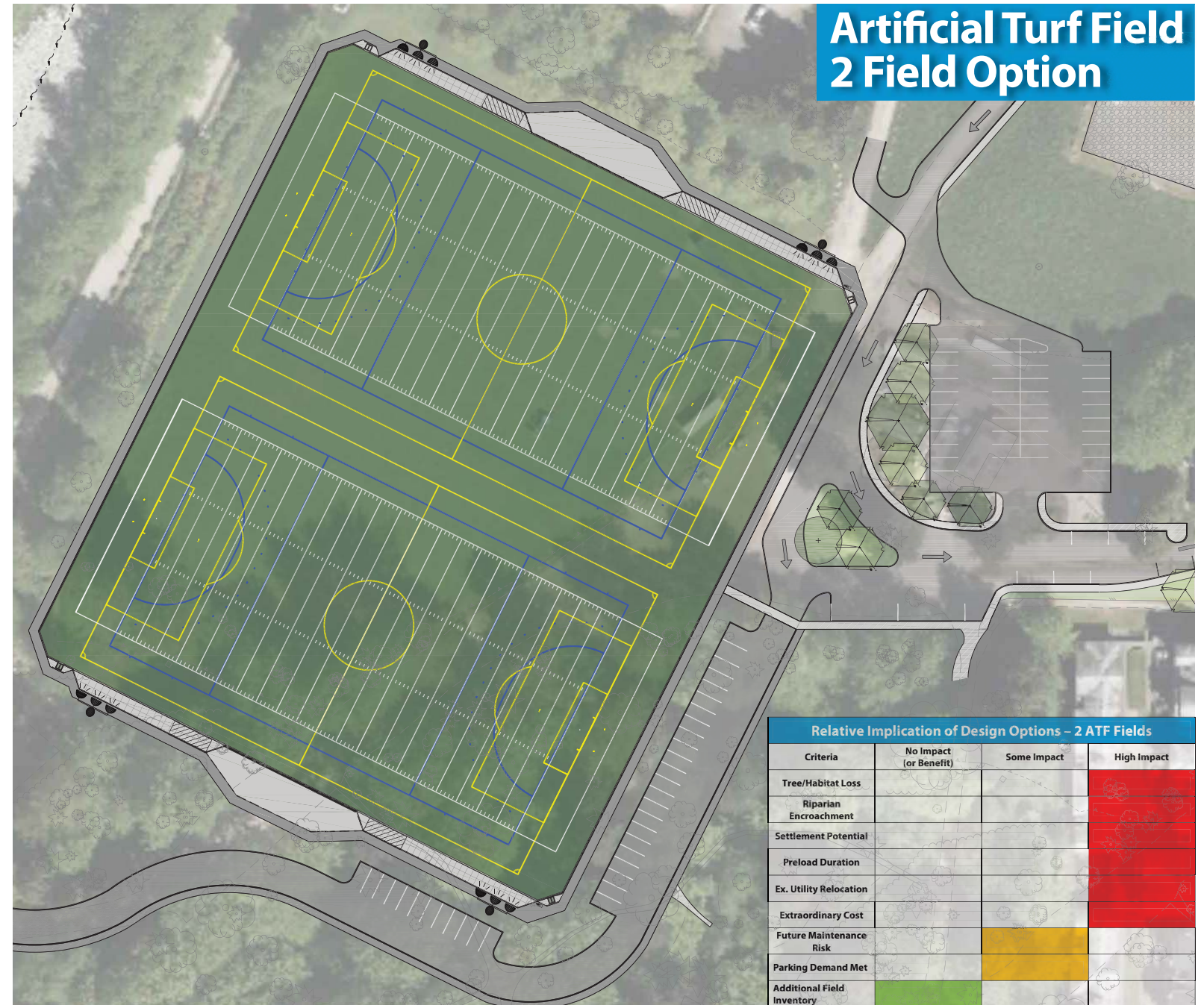
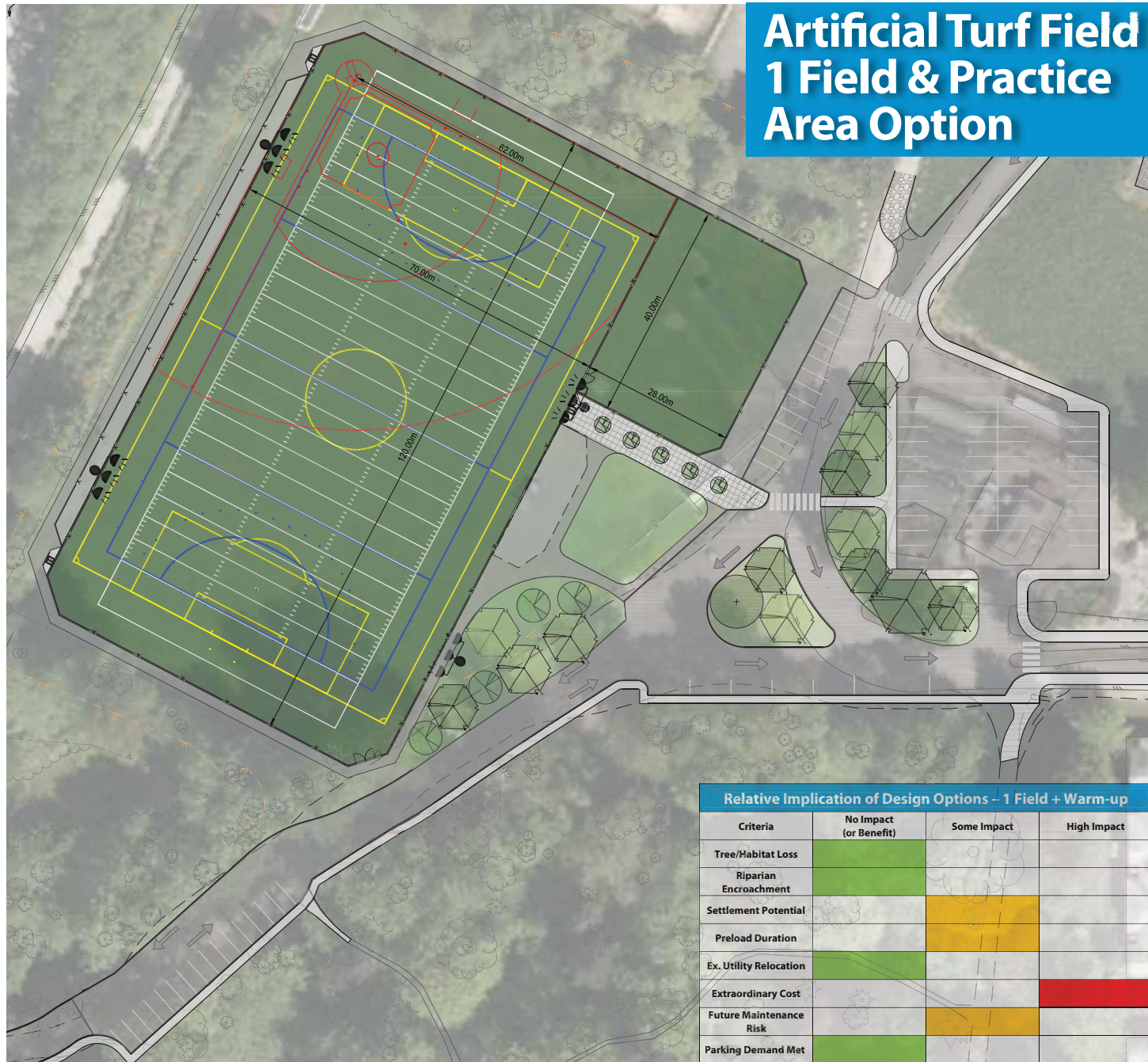
Trail Kiosk



Rain Gardens & Wetlands



Development of Preliminary Options



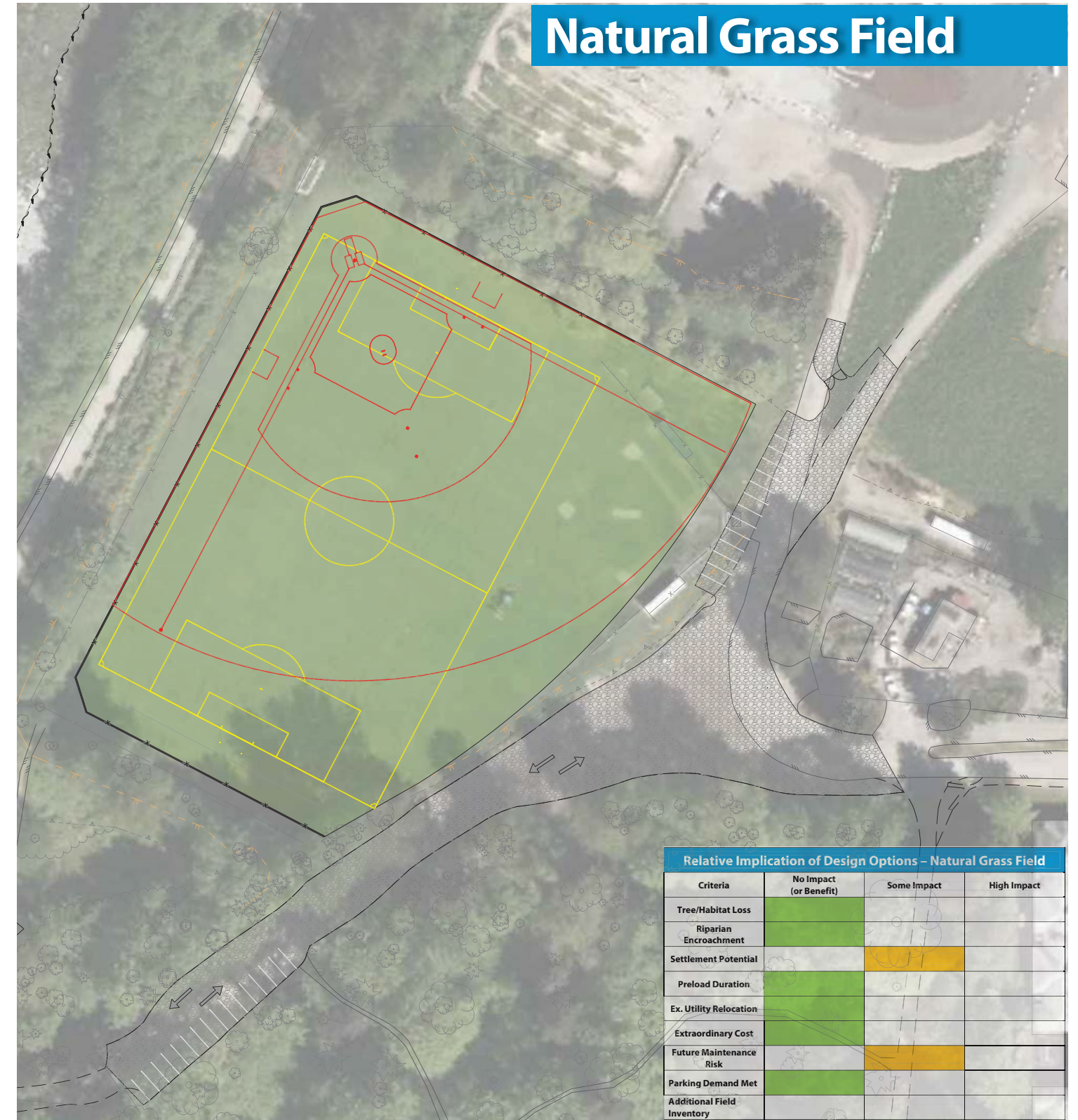
- The 2 field option presents several **challenges** including;
- High impact to forest and extensive tree removal (approx. 3 acres would be disturbed)
 - Grade results in high risk of future differential settlement/future field repair
 - Utility relocation, fill, preload duration, grade management results in high impact to riparian setback/wetland
 - Substantial extra cost

Artificial Turf & Natural Grass Options

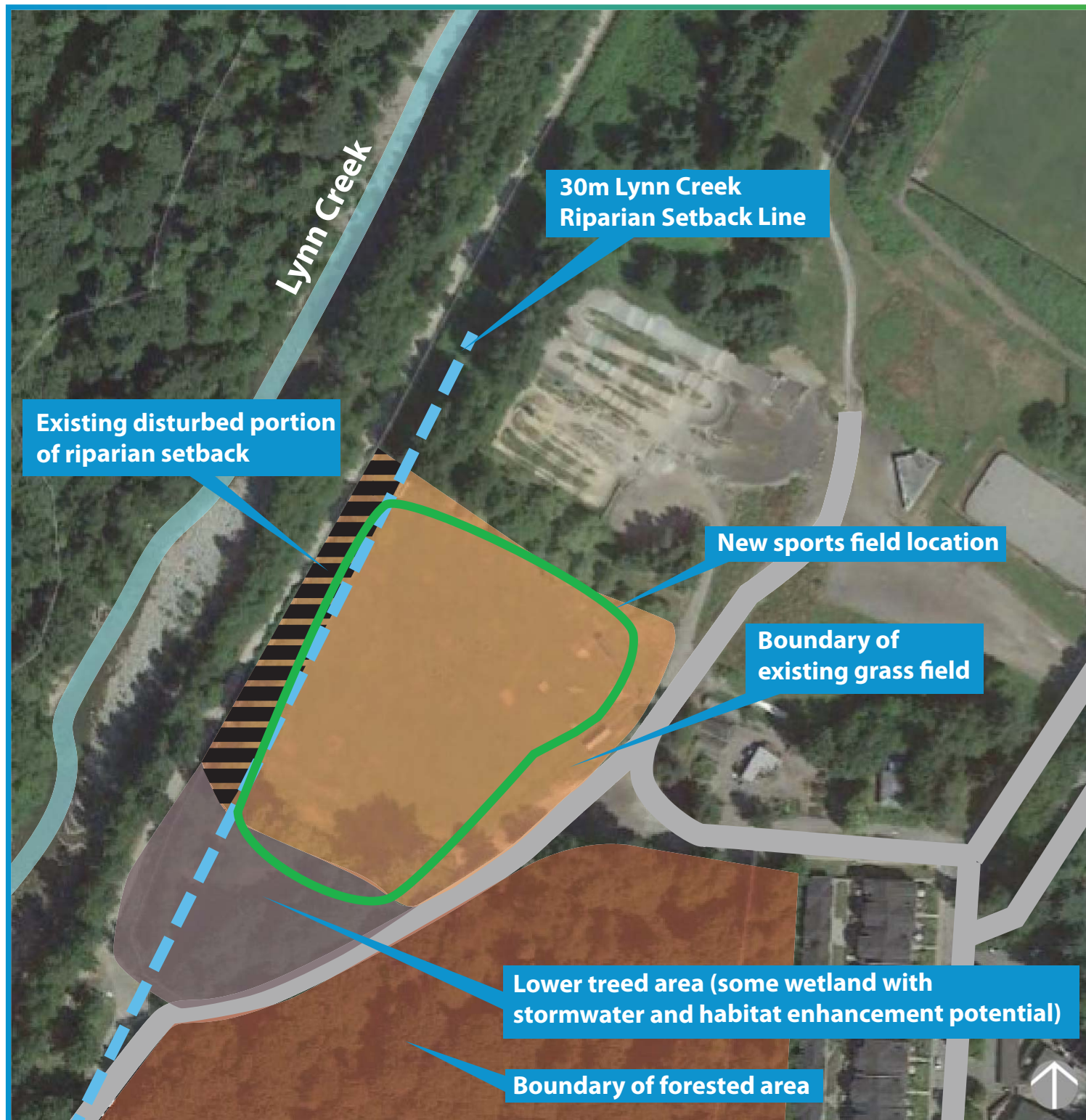
Artificial Turf



Natural Grass Field



Geotechnical & Environmental Overview



Aerial Perspective

Artificial Turf Option



Natural Grass Option

