

What is Happening?

The District of North Vancouver is preparing a conceptual master plan for the future of Seylynn and Bridgman Parks. The conceptual master plan will recommend improvements to the recreational activities, environmental resources, and amenities in the parks.

The Process

The conceptual master planning process includes three stages of public engagement:

- #1 - visioning stage (now) - public and stakeholder sessions
- #2 - review of plan options (November/December 2013)
- #3 - review of draft conceptual master plan (Early 2014)

Purpose of this Session

The purpose of this session is to introduce the project and obtain your input for the conceptual master plan.

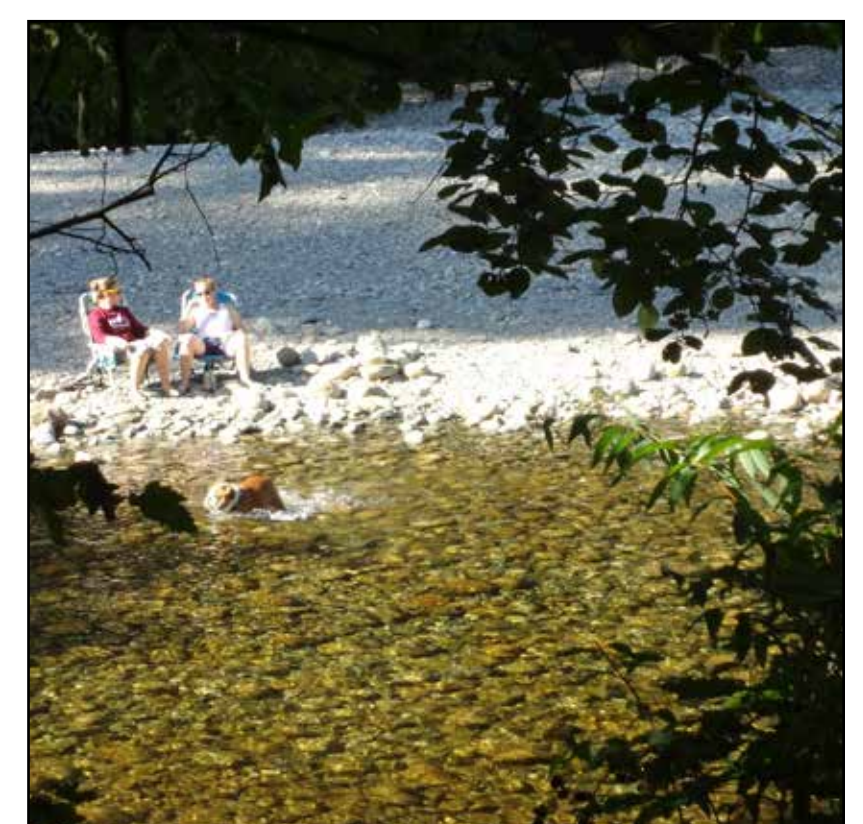
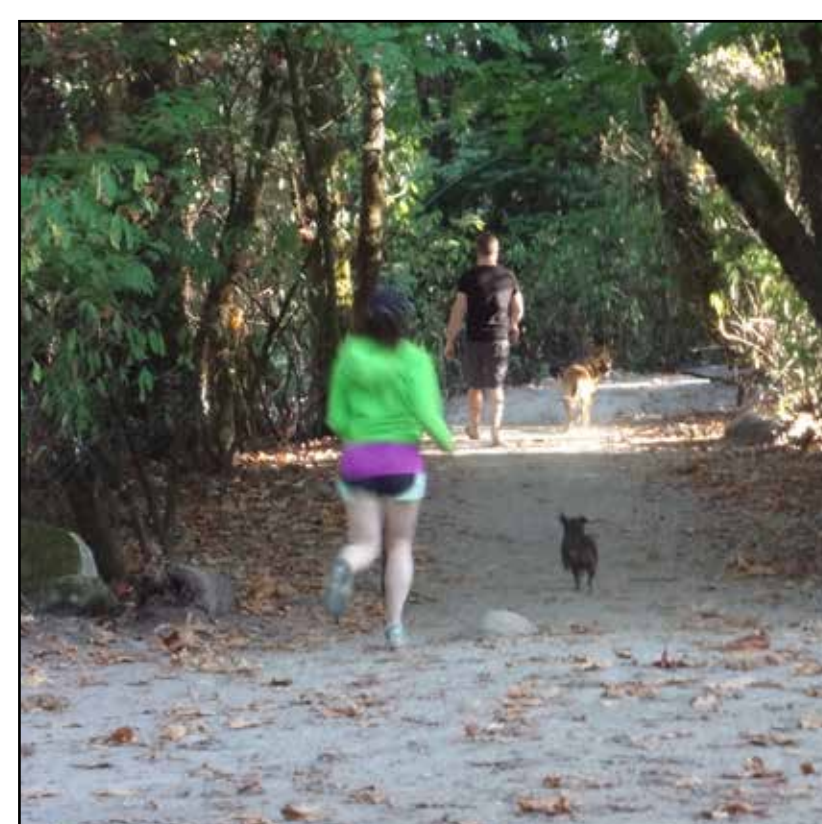
We are providing information on:

- Project context
- Site inventory and analysis

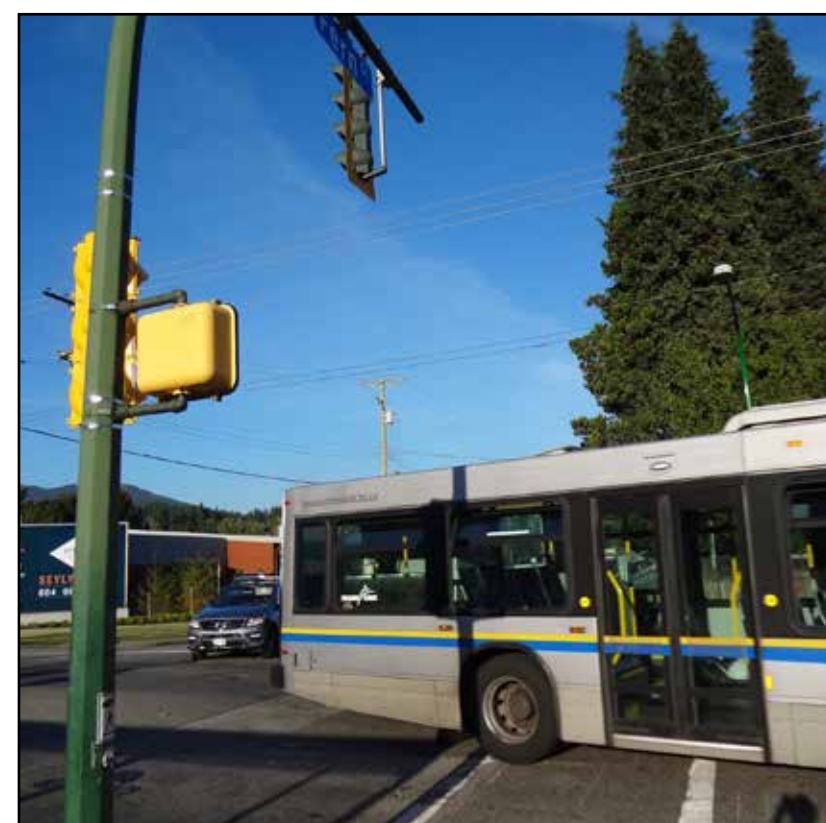
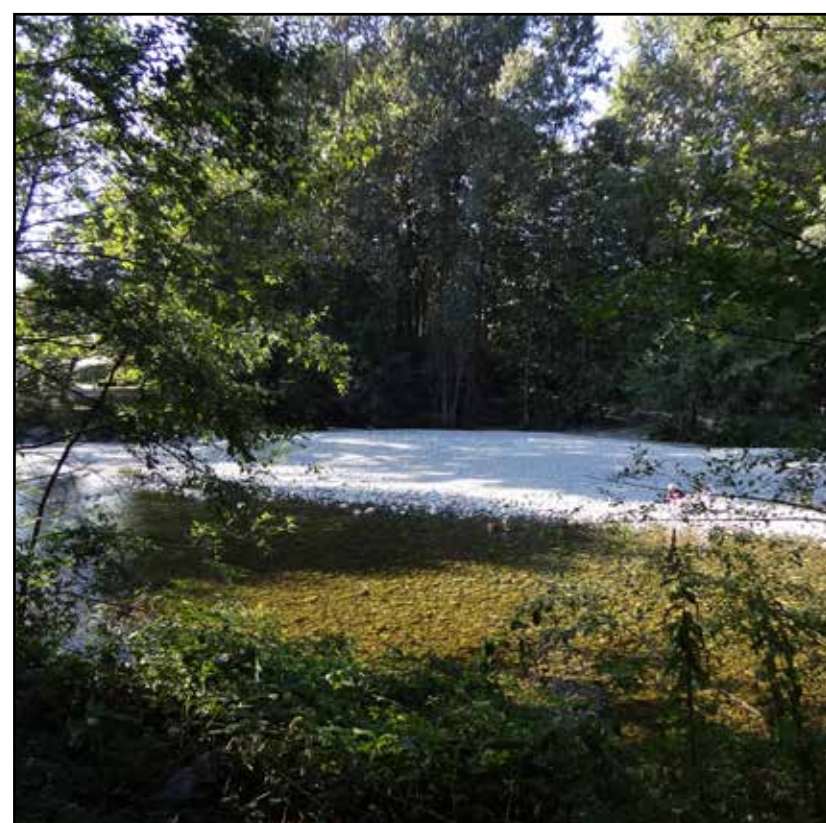
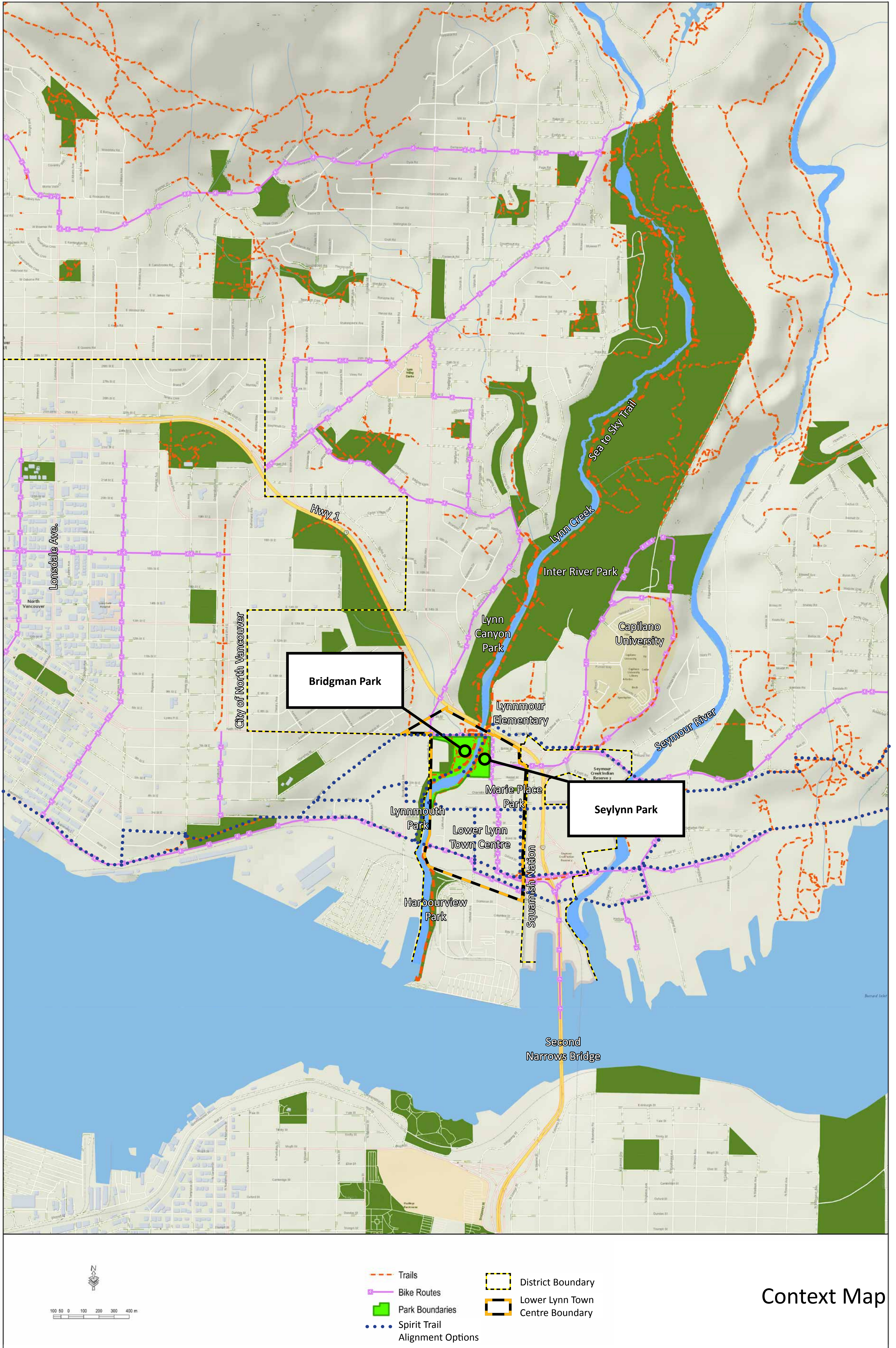
We are requesting your input on:

- What you value and find challenging about the parks today
- Vision and objectives for the future of the parks
- Amenities that you would like to see in the parks

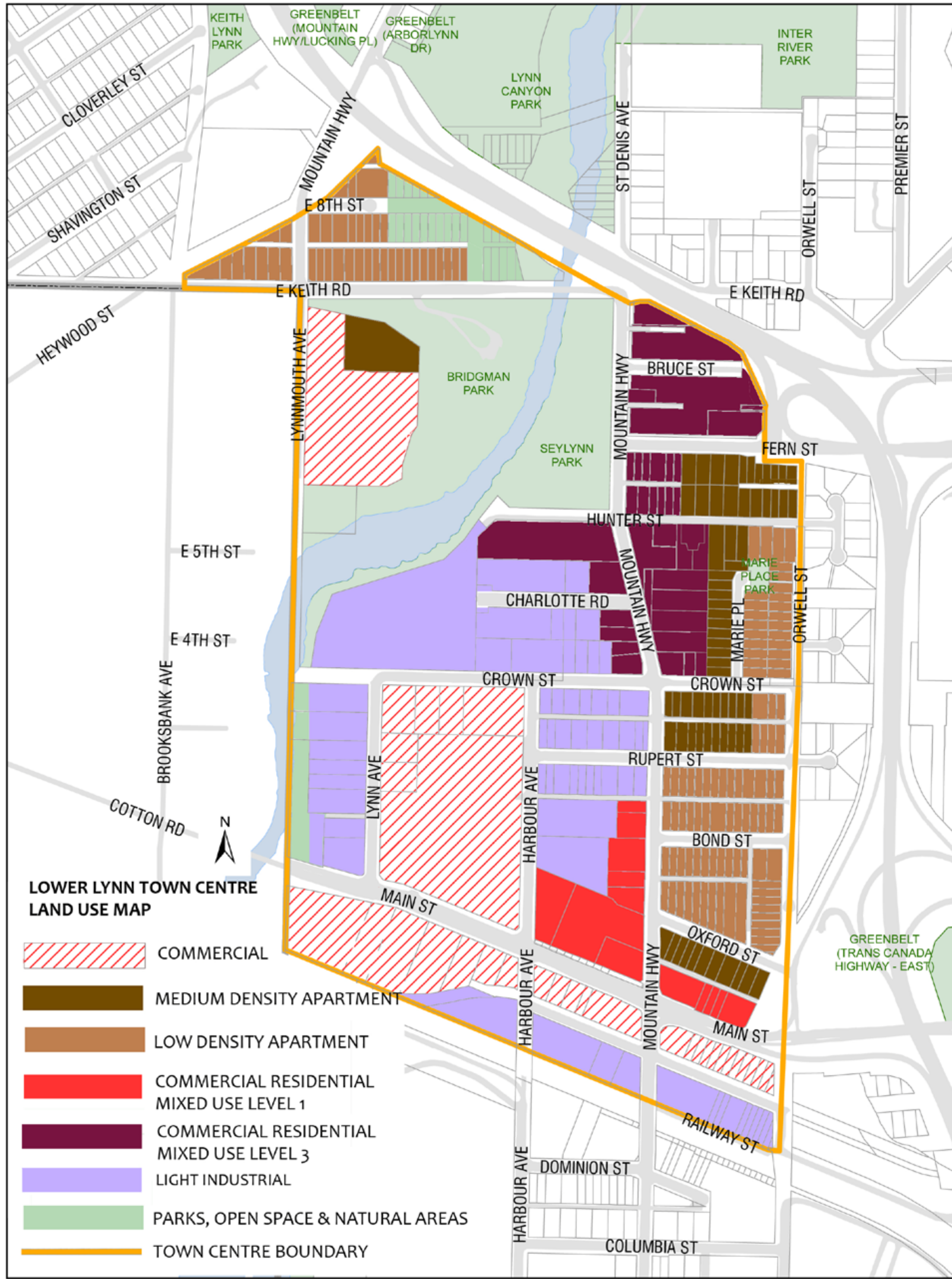
We hope that you will participate in this workshop and complete the comment form. The comment form is also available at dnv.org



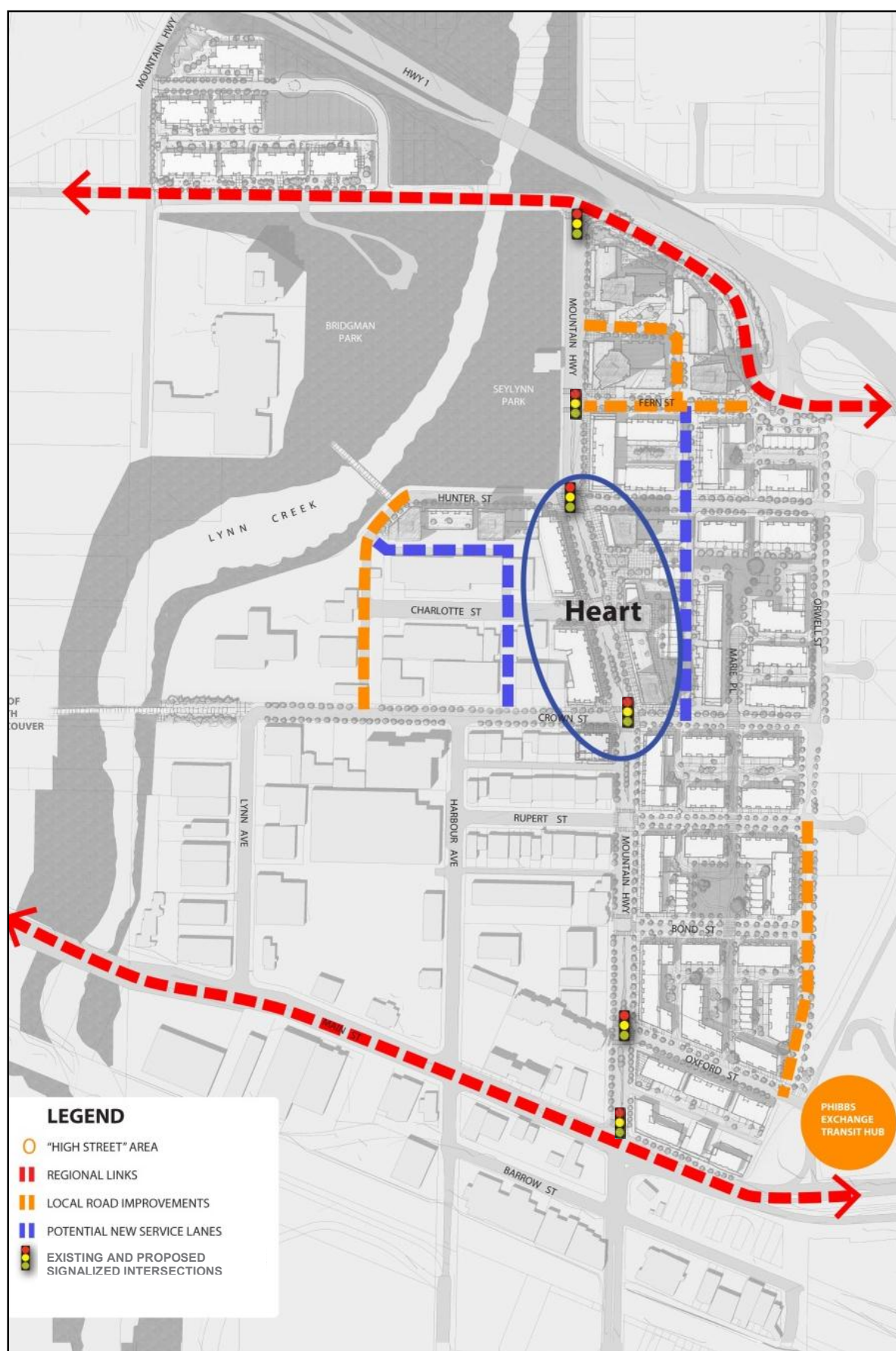
Site Context - DNV



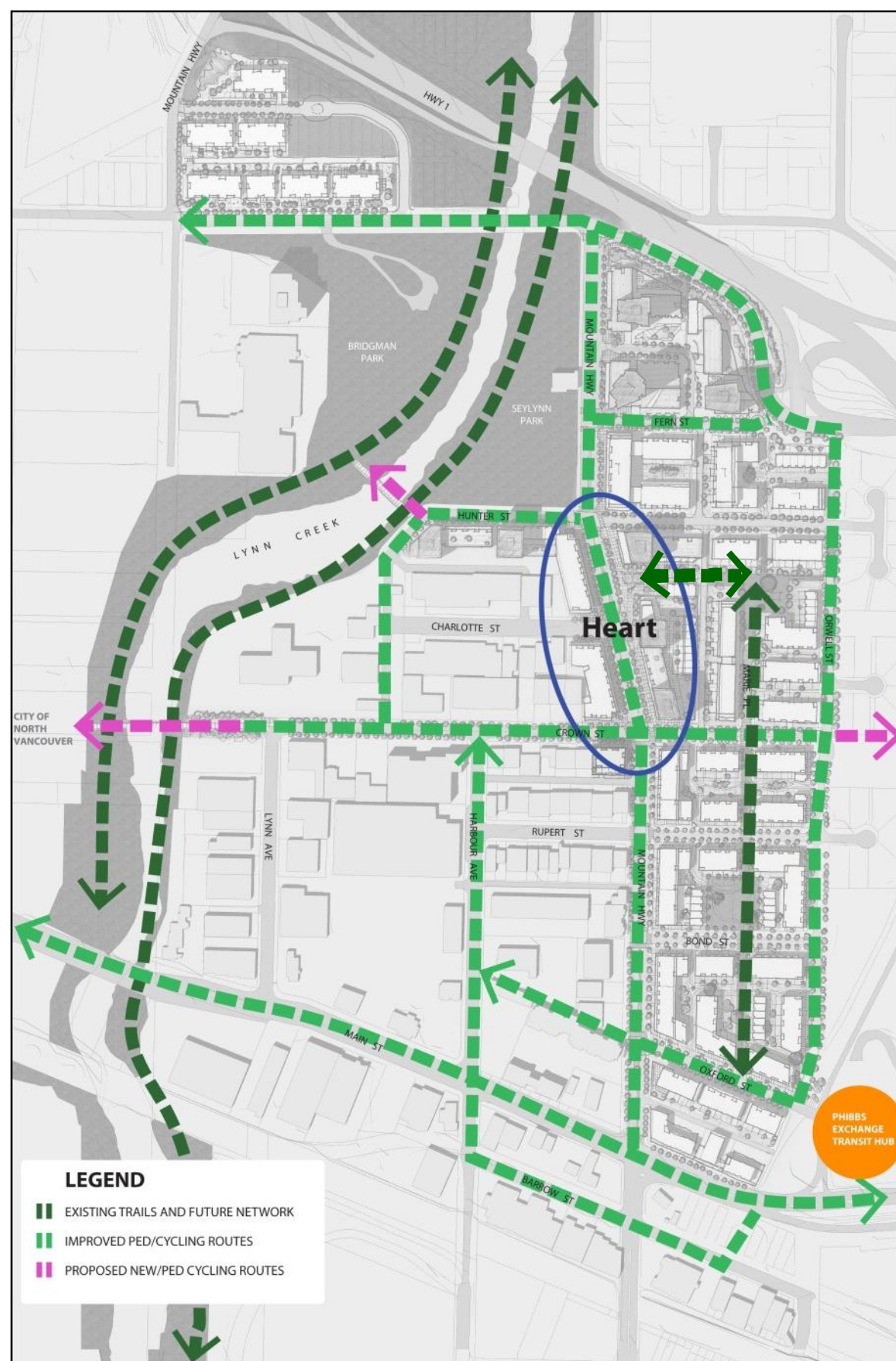
Site Context - Lower Lynn



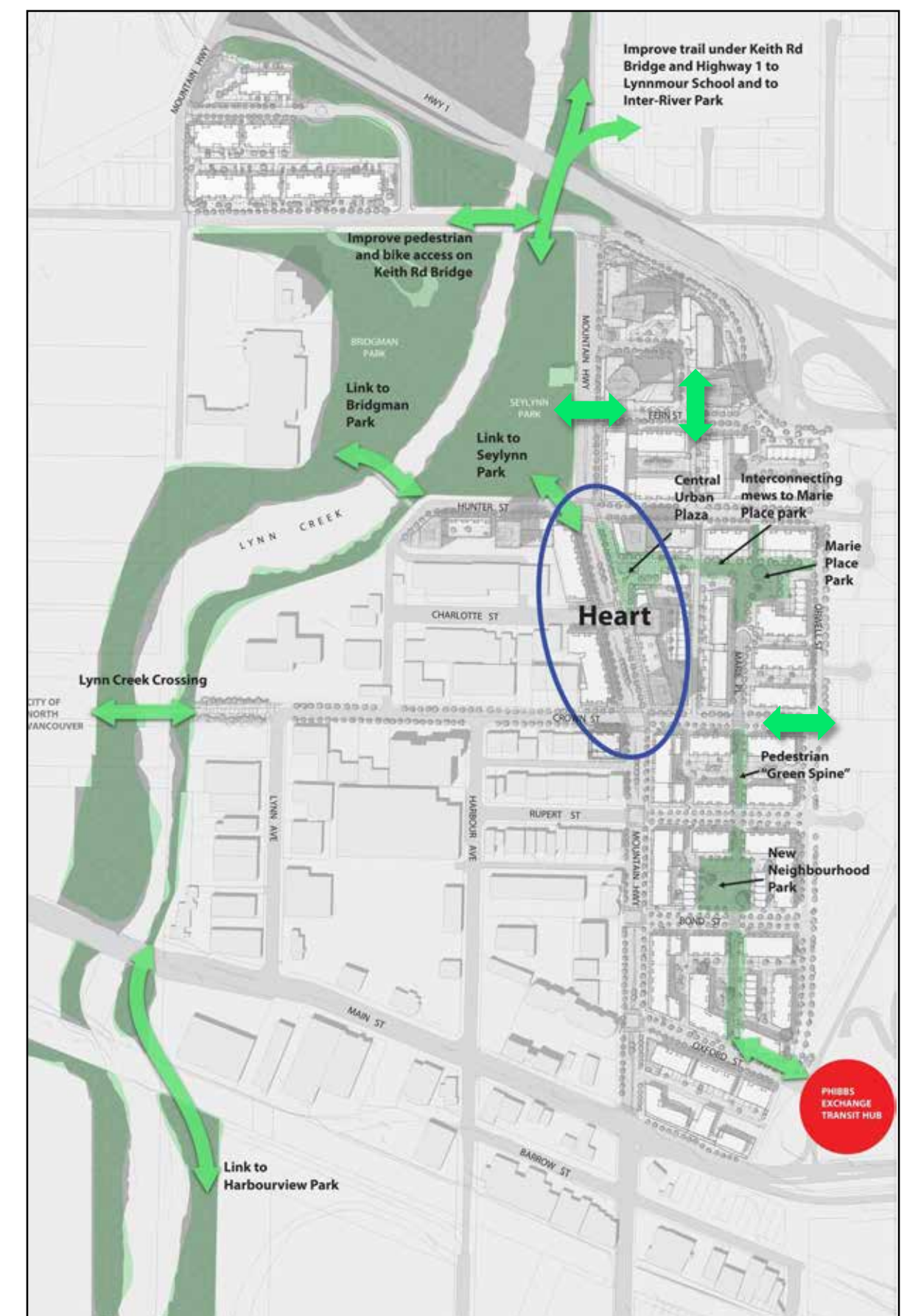
OCP Land Use Designations



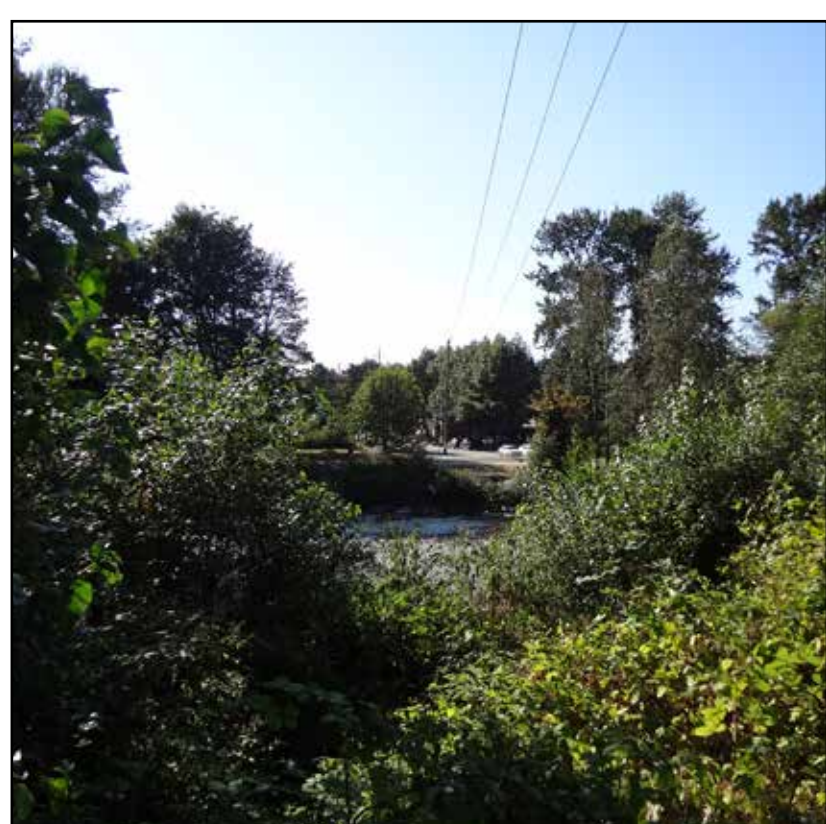
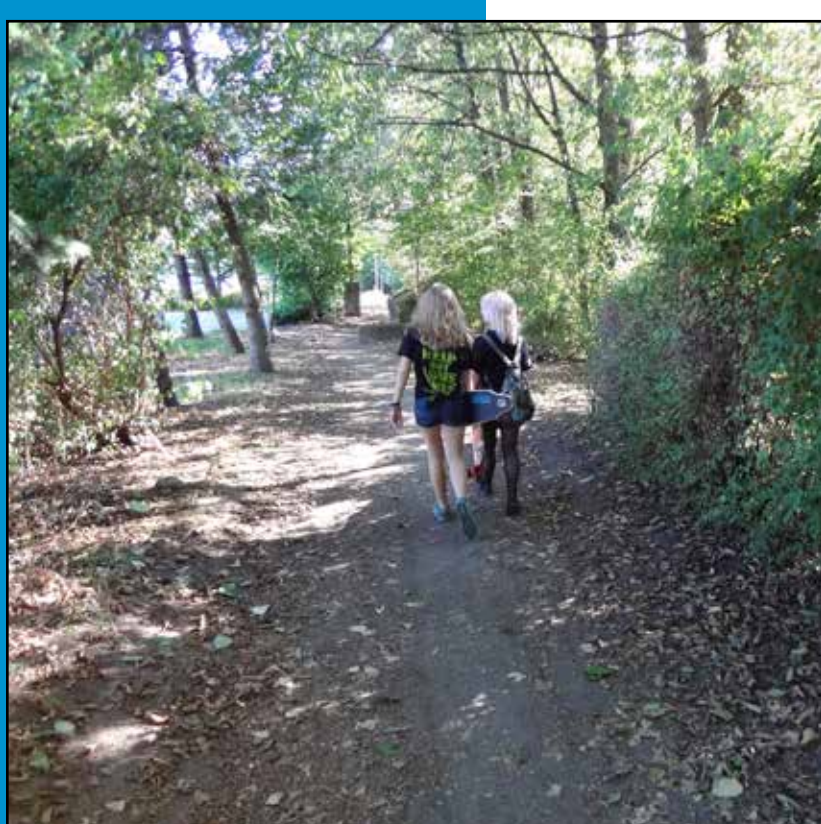
Proposed Road Network (From Lower Lynn Town Centre Implementation Plan)



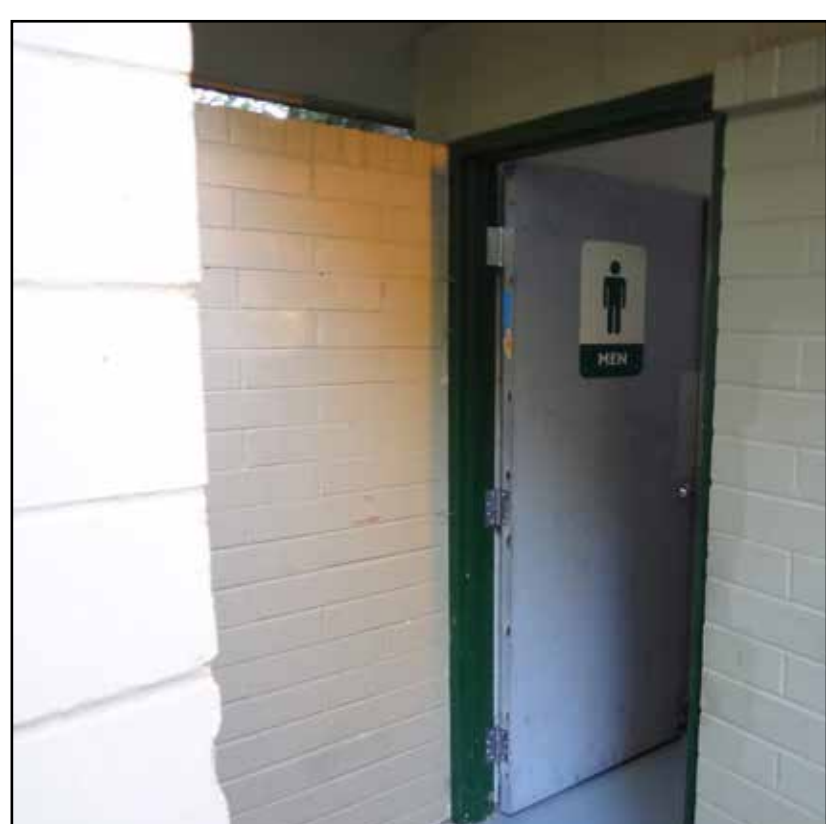
Proposed Pedestrian and Cycling Network (From Lower Lynn Town Centre Implementation Plan)



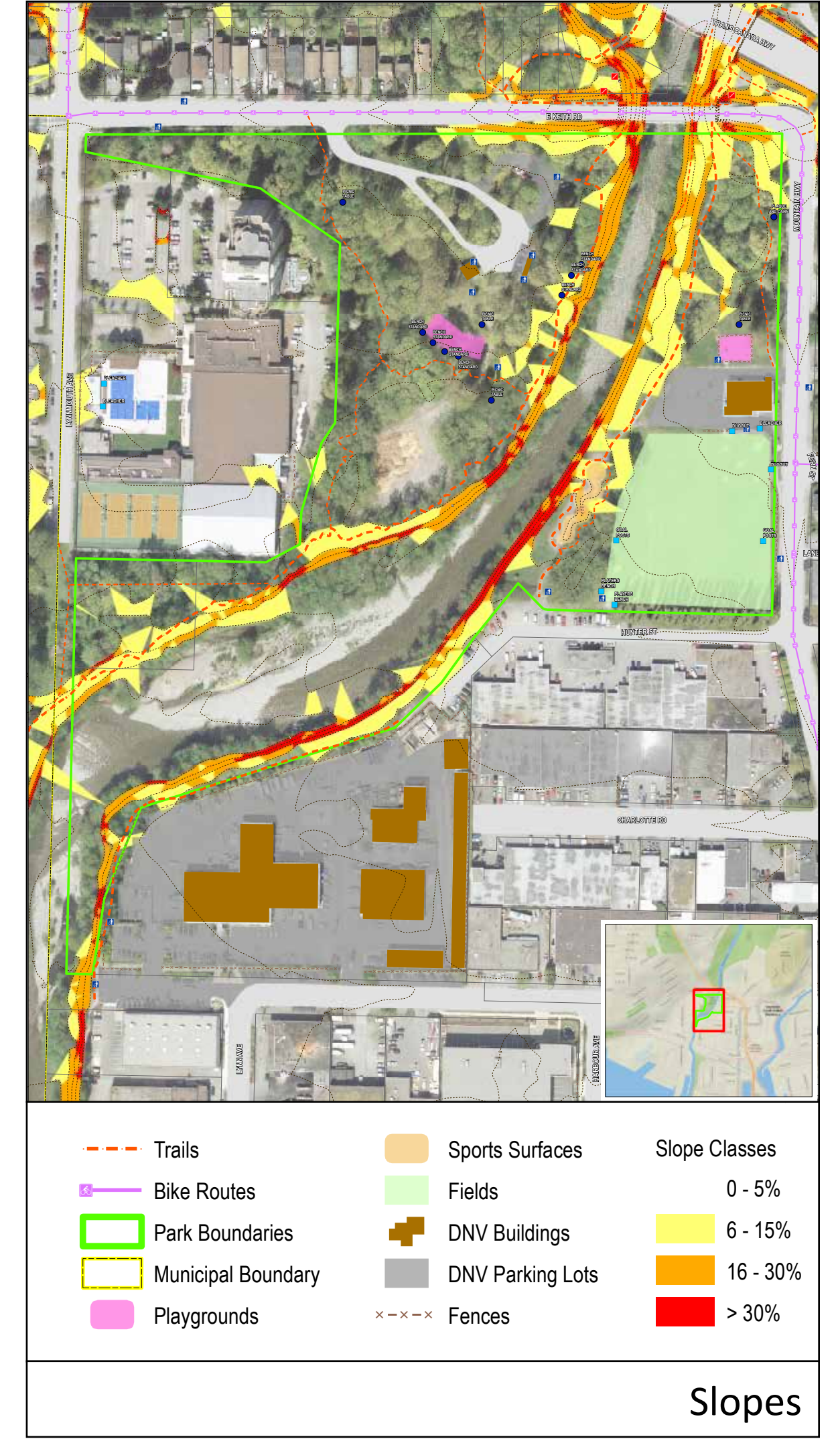
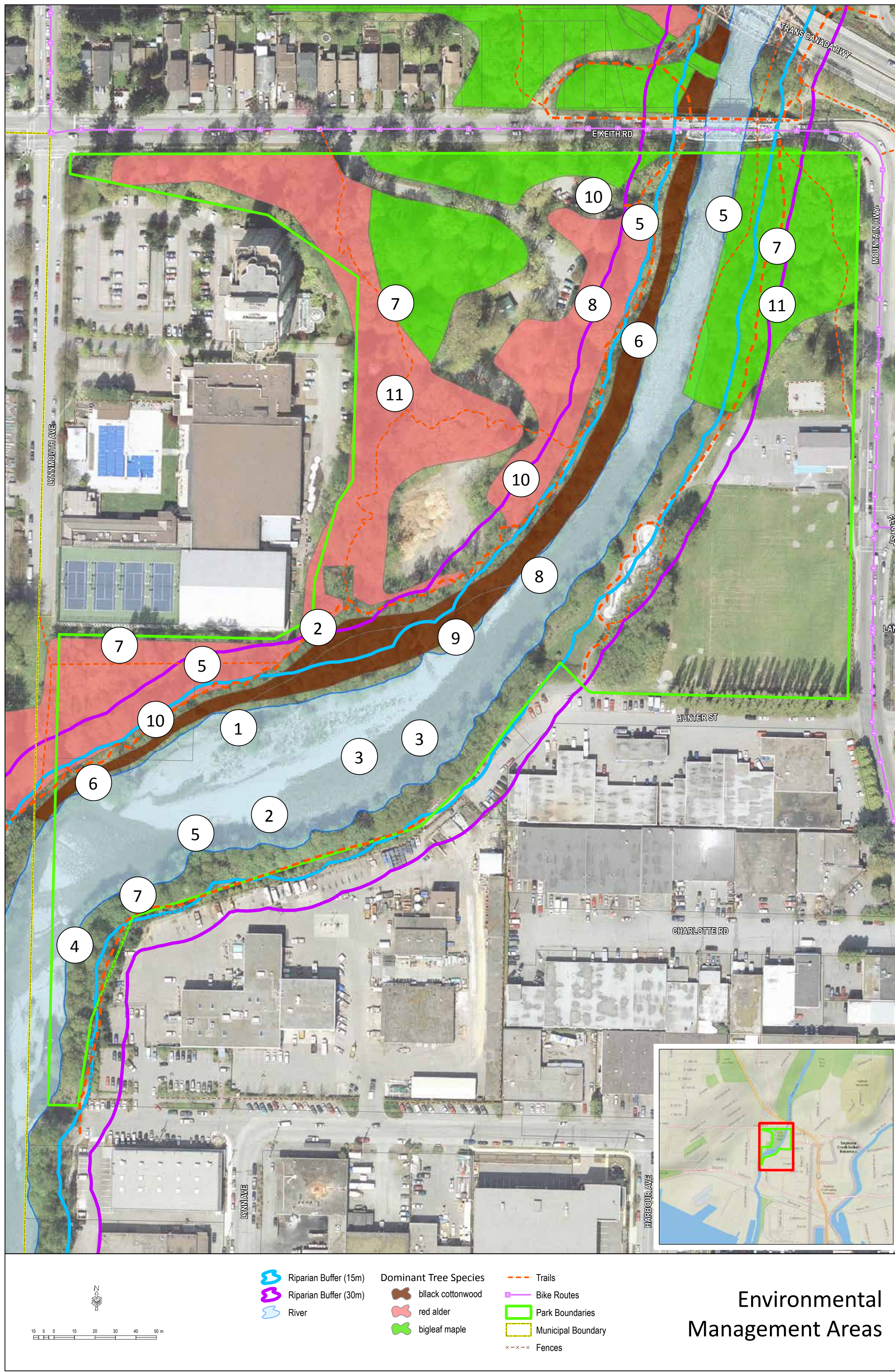
Proposed Parks and Open Space Network (From Lower Lynn Town Centre Implementation Plan)



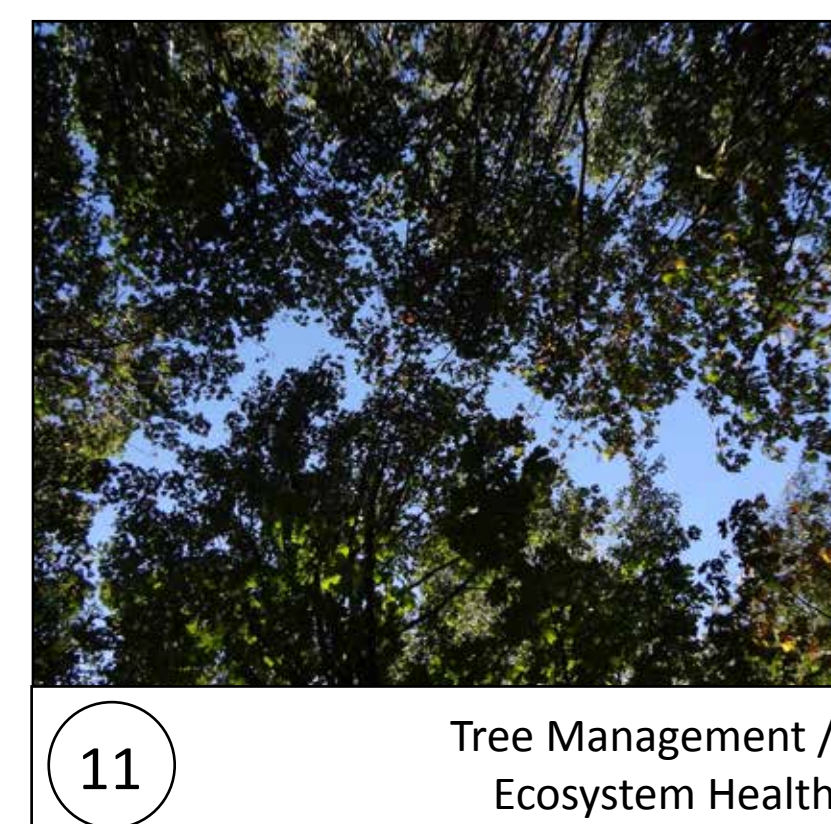
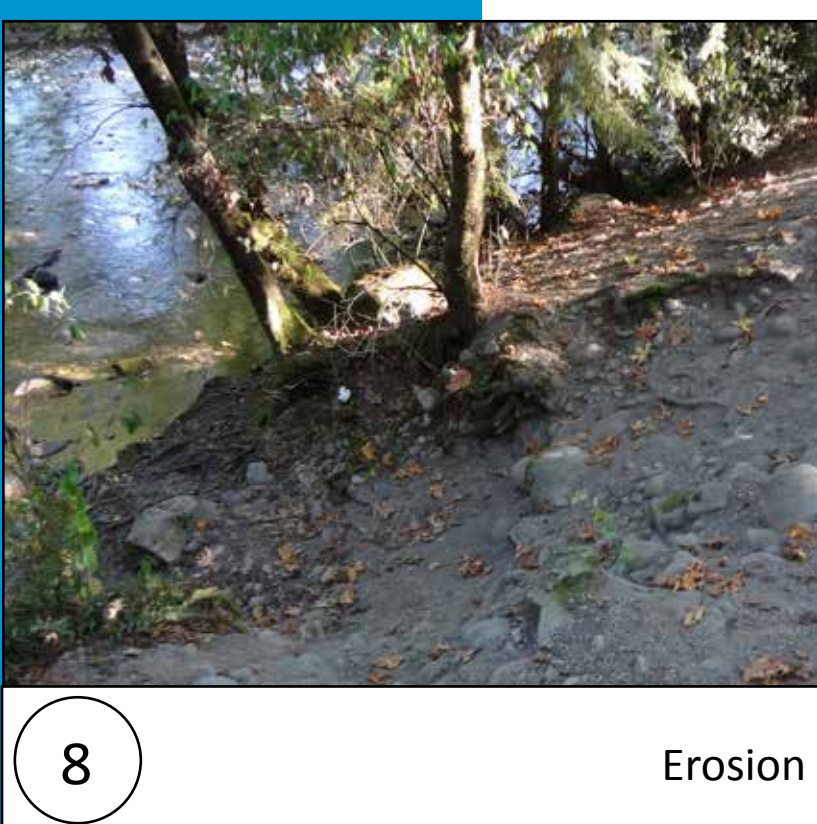
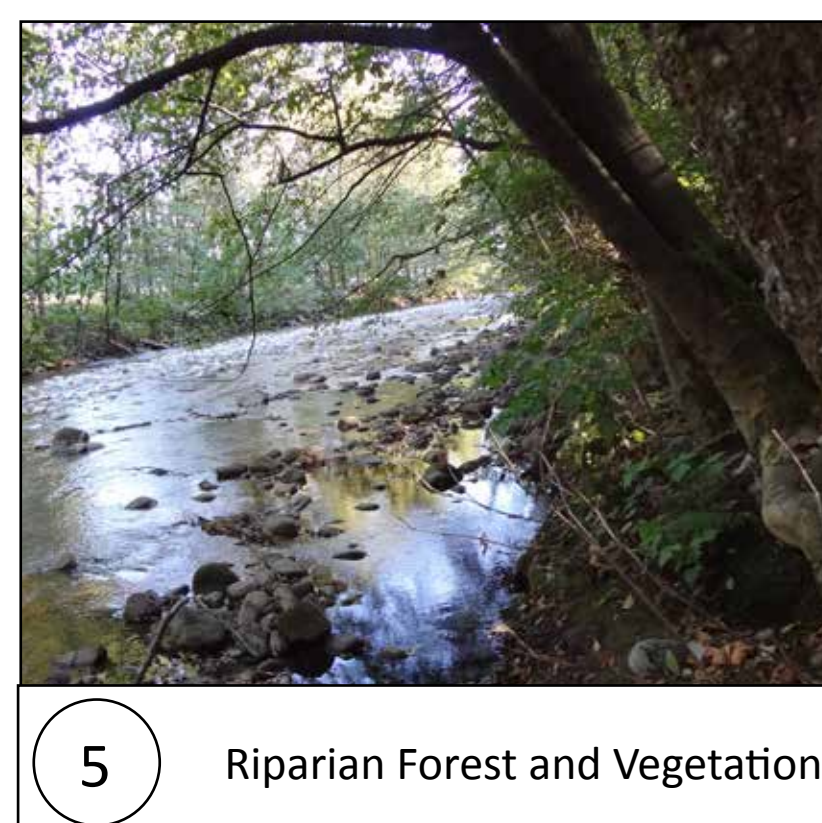
Site Inventory - Amenities



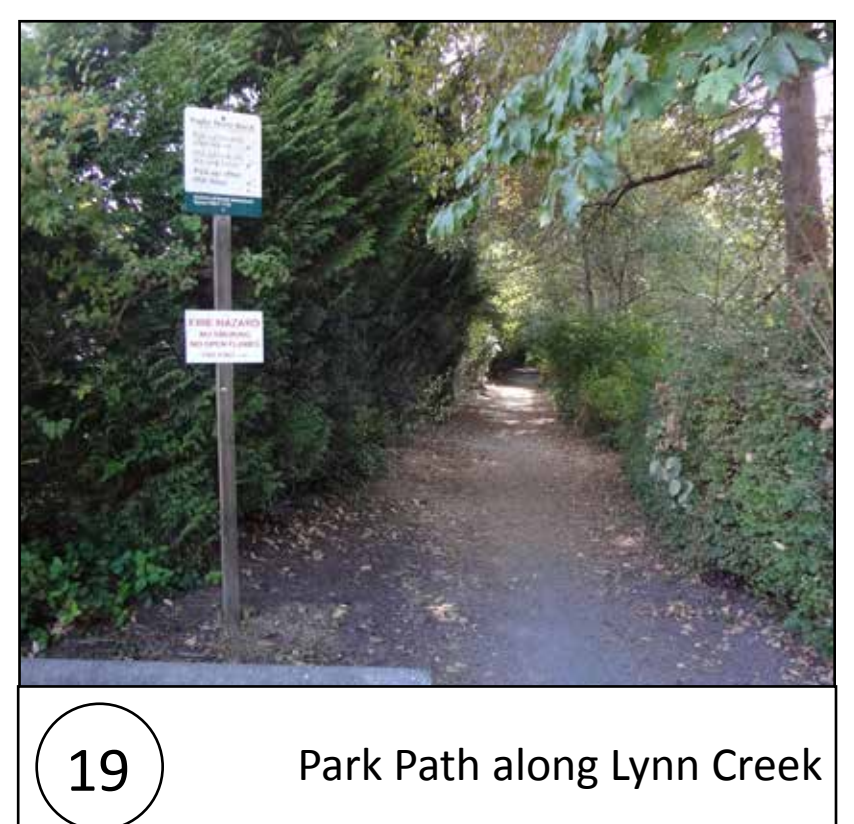
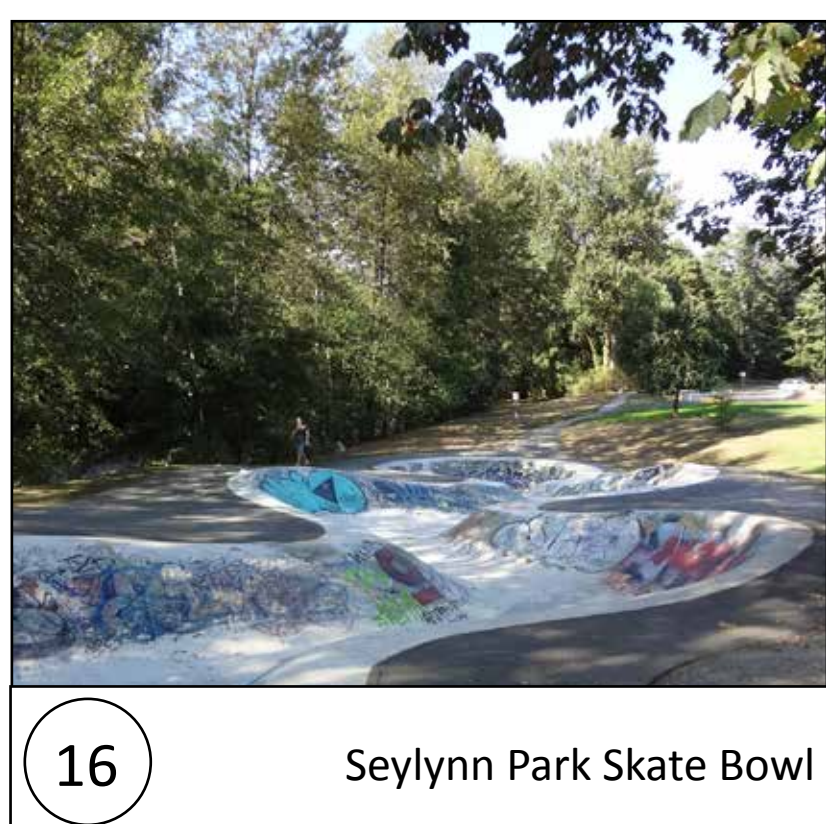
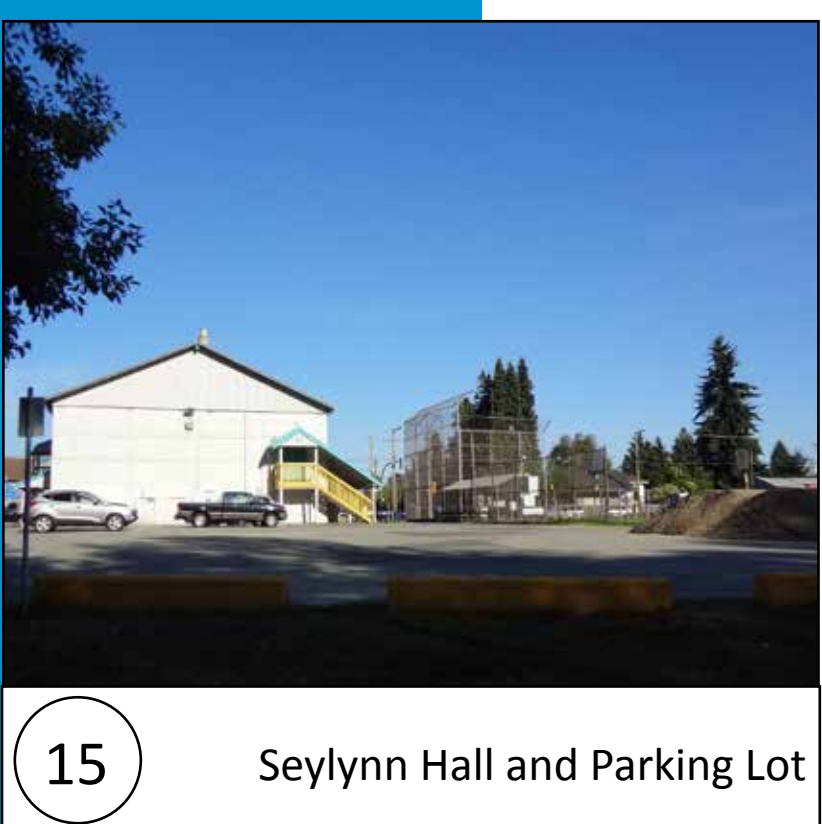
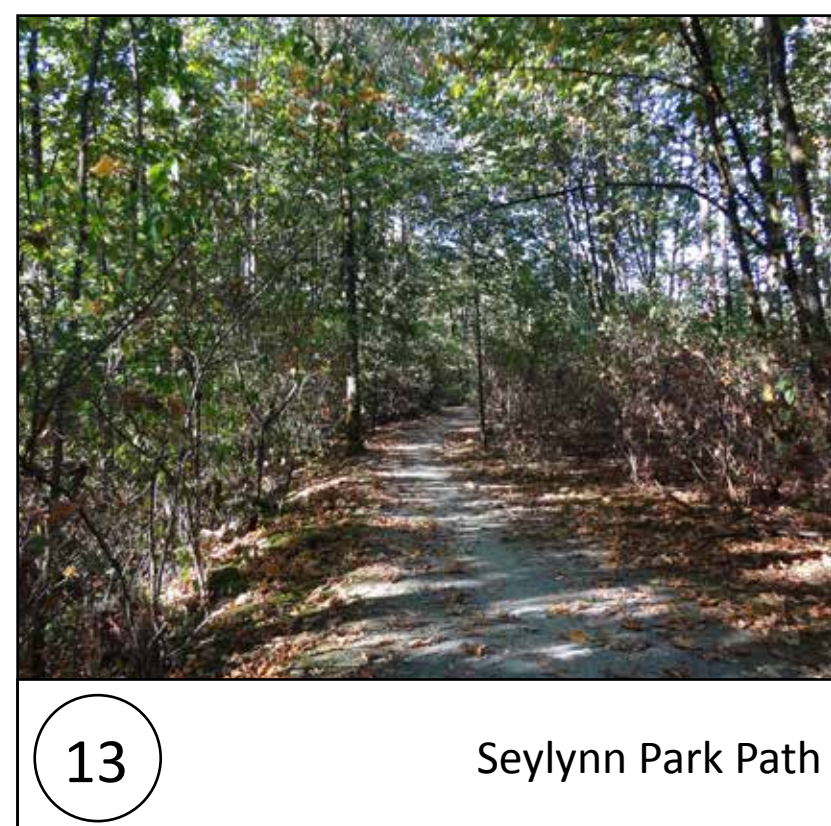
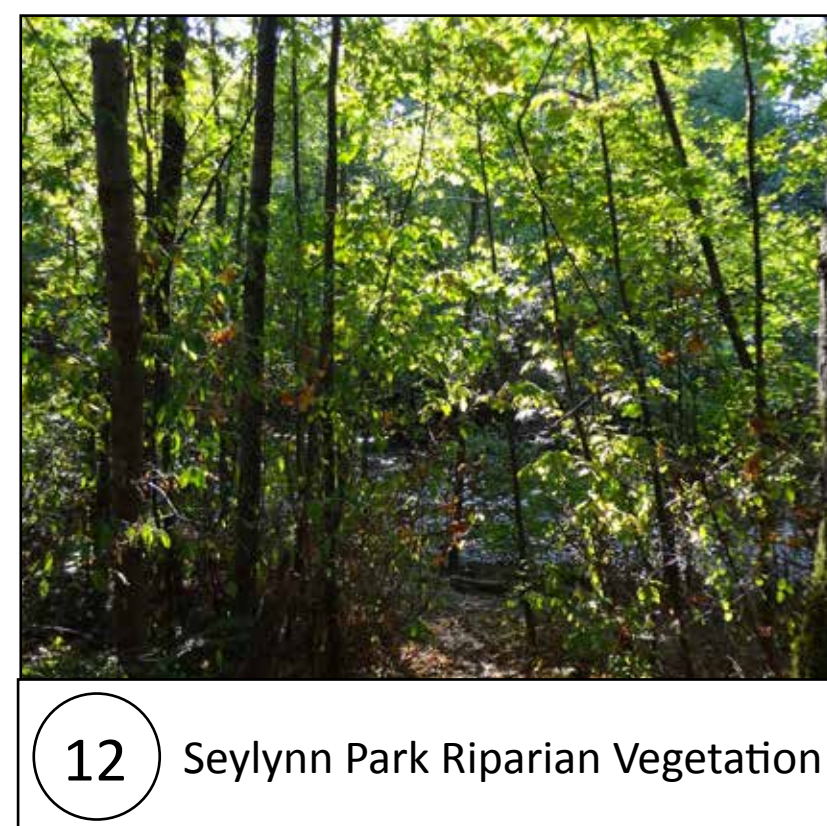
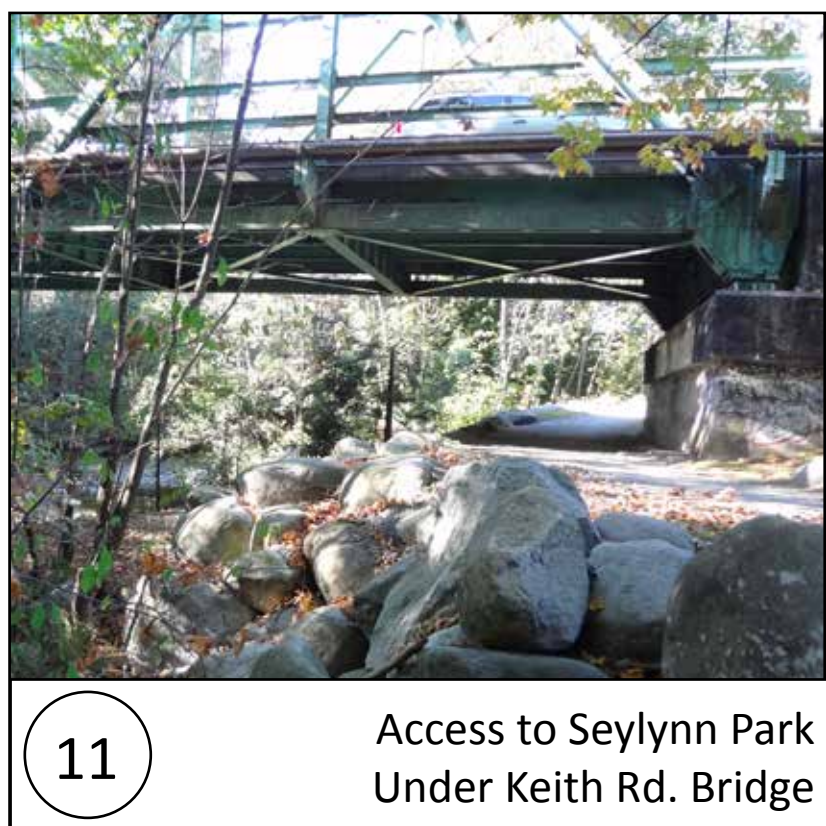
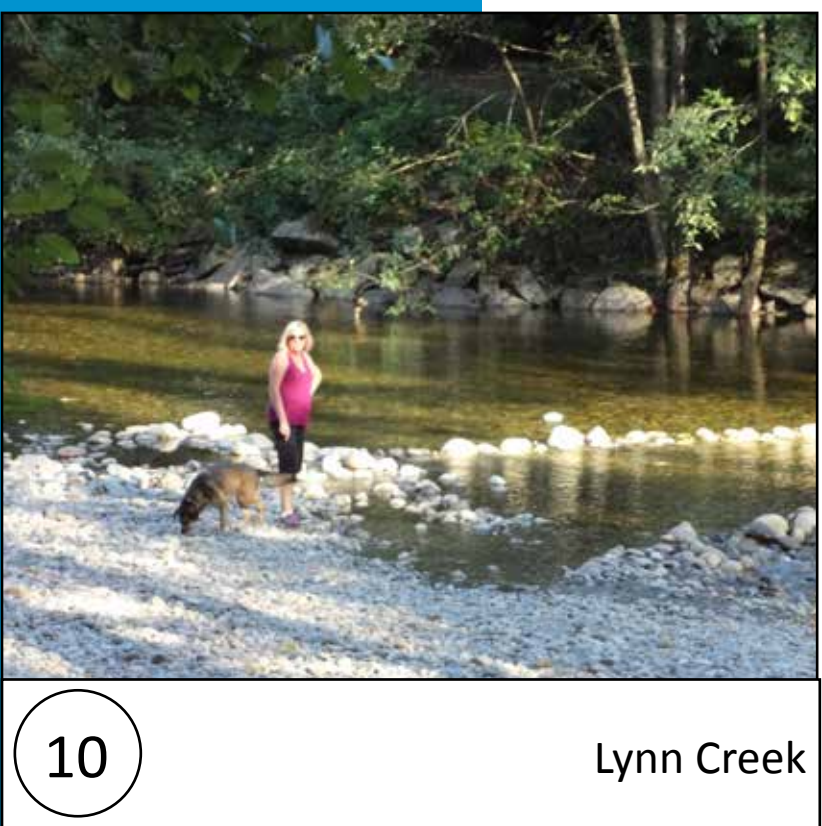
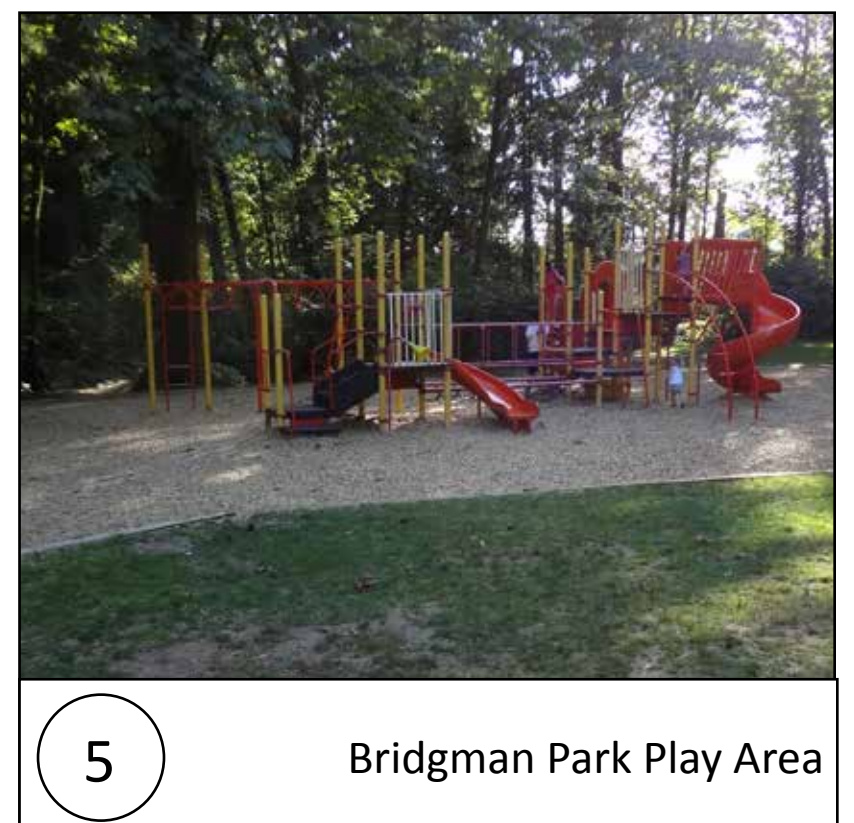
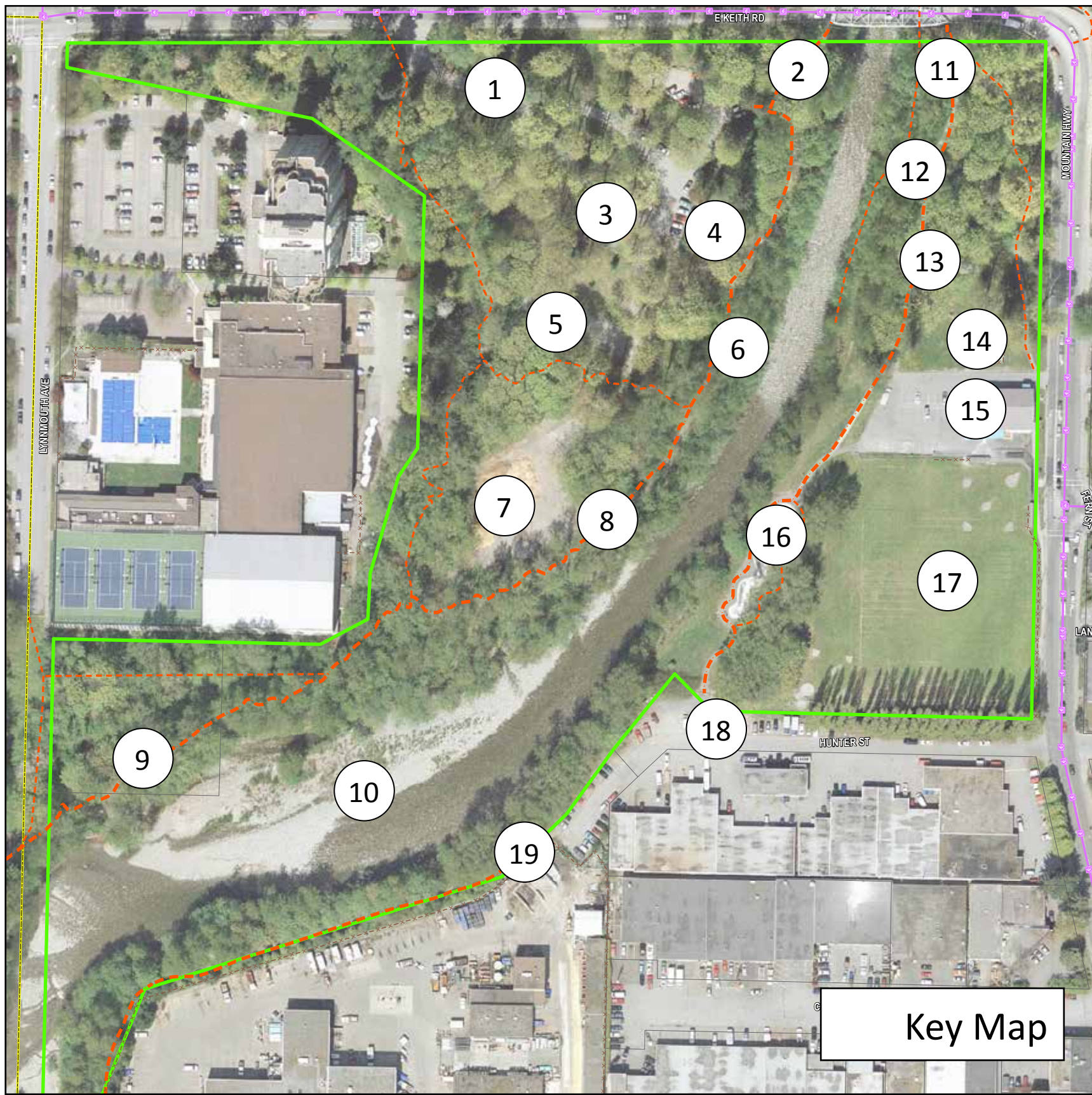
Site Inventory - Environmental

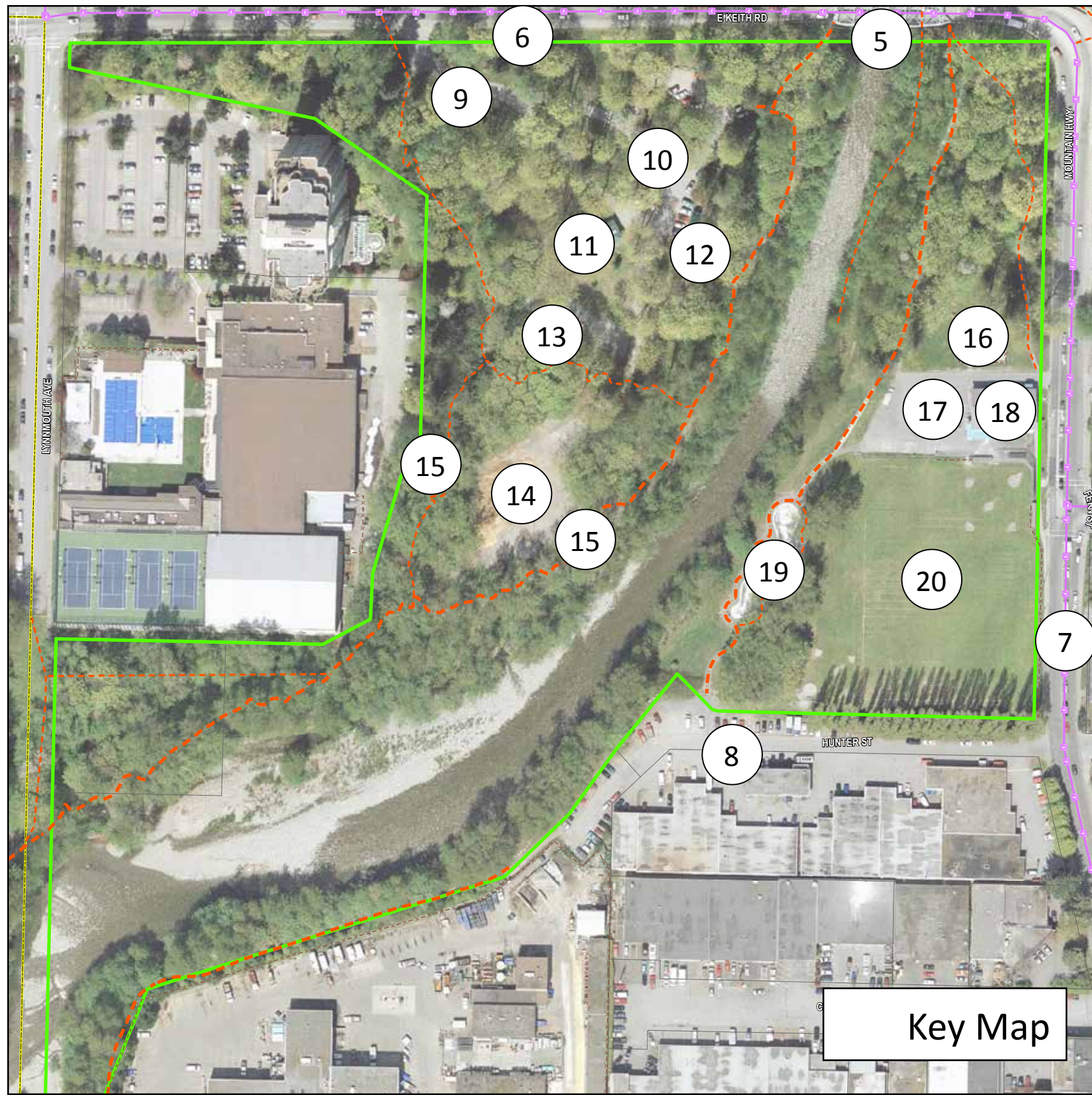


Environmental Management Considerations



Site Inventory - Photos





FEATURE ANALYSIS

FEATURE	CHALLENGES	POTENTIAL OPPORTUNITIES
Overall		
1. Creek Flood Zone	Potential flooding of parks and beyond	Review flood protection options
2. Ecologically Sensitive Areas	Damage from dogs Unsanctioned paths down creek bank	Develop environmental management strategy that considers elements such as fences along riparian area and viewing platforms
3. Adjacent residents and other uses	Some conflicting land uses	Consider park uses that are sensitive to neighbours concerns
Overall Transportation		
4. Trails	Limited capacity, accessibility and connectivity Poor lighting	Improve trail system and provide connections to Lynn Creek Sea to Sky trail and future Spirit Trail alignment Consider lighting main paths
5. Connections Across Creek	Difficult access to Keith Rd. Bridge	Consider pedestrian/bicycle bridge between the parks Incorporate park pedestrian/bicycle connections in Keith Road Bridge replacement
6. Keith Road Improvements	Changing traffic patterns at park boundary	Consider new sidewalk and reconfiguring vehicle entrance to Bridgman Park
7. Mountain Highway Improvements	Changing traffic patterns at park boundary	Consider new sidewalks and reconfiguring vehicle entrance to Seyllynn Park
8. Hunter St. Parking	Limited parking Parking used by DNV staff and local businesses	Consider reconfiguring parking Use DNV Operations Yard parking during non-work hours
Bridgman Park		
9. Entrance Driveway	In high traffic area near bridge	Improve turn-off from Keith Rd.
10. Parking	Layout not efficient	Refine parking layout
11. Washrooms	Reaching end of life-cycle	Improve maintenance until replacement
12. Picnic Shelter	Poorly sited adjacent to parking	Move to a better location
13. Playground	Old swing set	Provide nature-play features
14. Operations Woodchip and Gravel Storage	Unightly Operational use	Analyze park need and adjust storage and reforest or add new use
15. Outdoor Exercise Equipment	Old In disrepair	Replace with new equipment, remove, or seek alternate use
Seyllynn Park		
16. Tot-lot	Old play equipment	Replace play equipment or redesign play area
17. Parking	Unightly Close to riparian area	Analyze parking requirements and possibly relocate in park
18. Seyllynn Hall	Old building - end of useful life	Analyze replacement options with Recreation Commission
19. Skate Bowl	Old surfacing Conflict with pedestrian path around edge of bowl	Resurface bowl Reconfigure paths Add new features
20. Sports Field	District-wide demand for fields	Analyze options with field users

