



Climate Adaptation

Caroline Jackson
Manager, Climate Action, Natural Systems and Biodiversity
June 14, 2022



Goals

- Reduce emissions as a corporation and as a community
- Protect and enhance biodiversity
- Improve our community's resilience to climate change

Six Pathways



Corporate Leadership



Low Carbon Buildings



Low Carbon Transport



Zero Waste



Healthy Ecosystems



Climate Adaptation

2017 Climate Adaptation Strategy



Climate Change Adaptation Strategy



Acting Now for
a Resilient Future

July 2017



Adaptation Initiatives

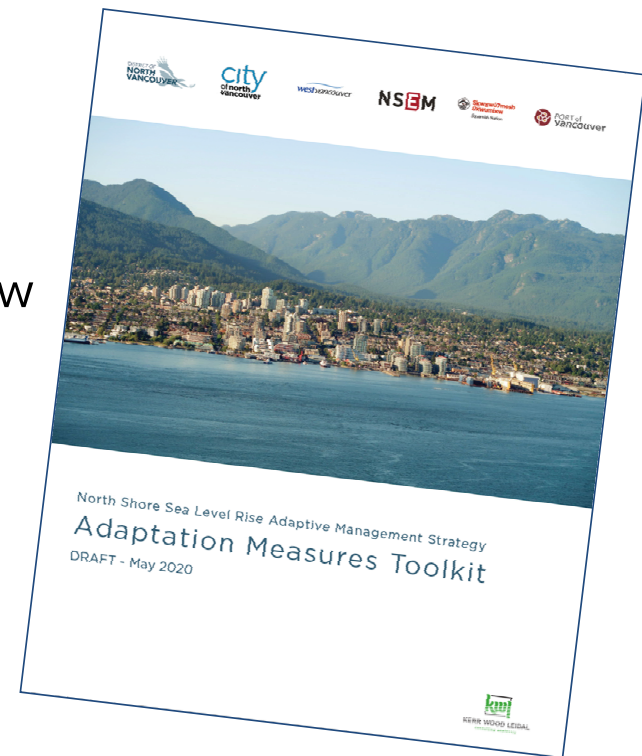
- North Shore Sea Level Rise Strategy
- Geohazard and stormwater management
- Wildfire protection program
- Resilient buildings
- Emergency preparedness and resilience (NSEM)
- Urban tree canopy project

North Shore Sea Level Rise Strategy



North Shore Adaptation Measures Toolkit

- Toolkit tailored to North Shore context
- 26 adaptation measures
 - Land use planning and development review
 - Structural flood protection works
 - Nature-based solutions



Sea Level Rise Adaptation Measures Toolkit

Examples



Nature-based measures for waves & erosion



Land raising



Land reshaping



Building flood-proofing

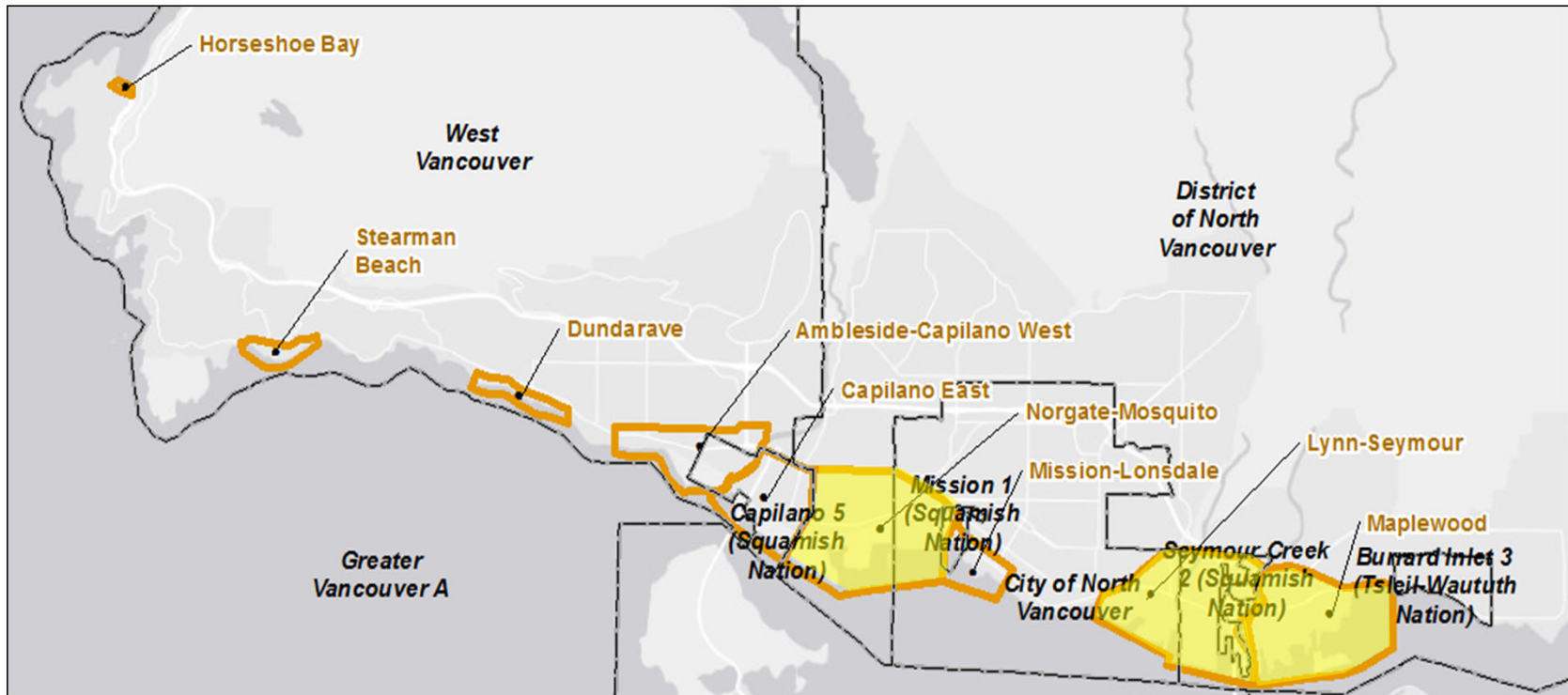


Setback dike



Pump stations

Comprehensive Adaptation Planning Zones



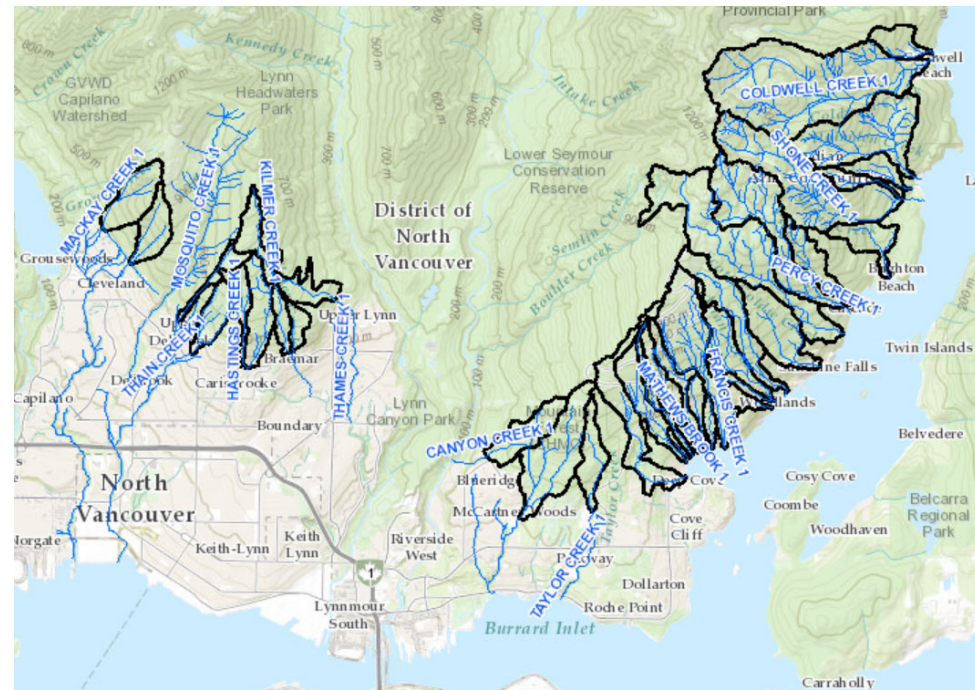
Sea Level Rise Strategy Actions

1. Continue North Shore sea level rise working group
2. Build knowledge and fill gaps
3. Create Comprehensive Adaptation Plans
4. Update regulations & policies (e.g. Coastal Development Permit Area)
5. Continue building public awareness
6. Coordinate with other governments



Geohazard and Stormwater Management

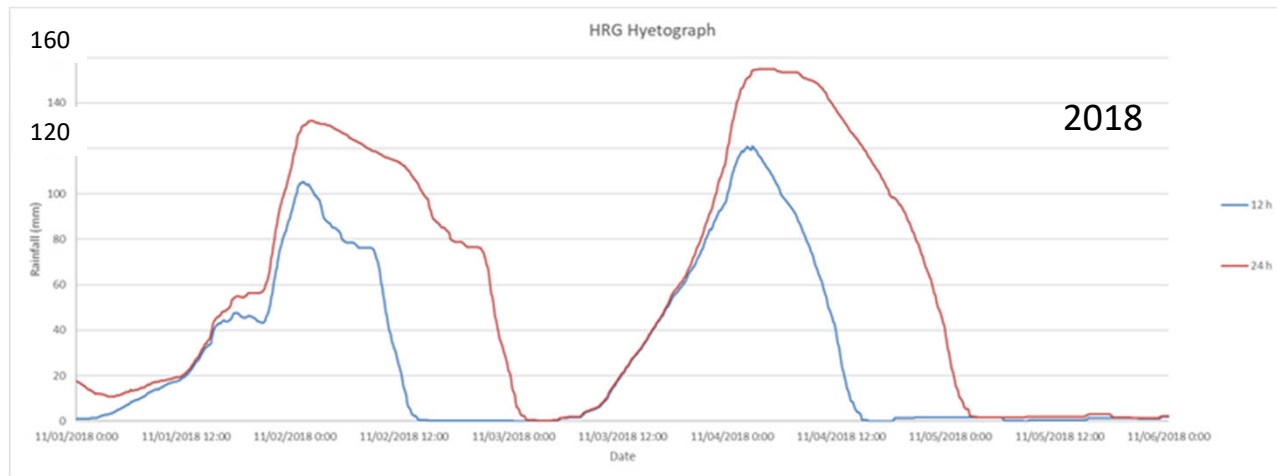
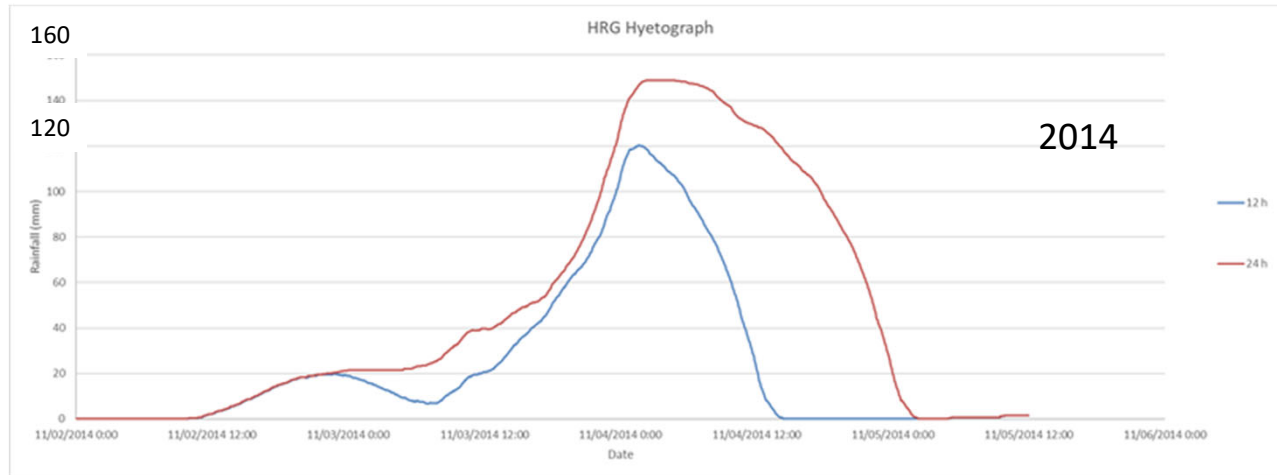
- Capture debris and prevent flooding



2014 Flooding



Rainfall Intensity: 2014 and 2018



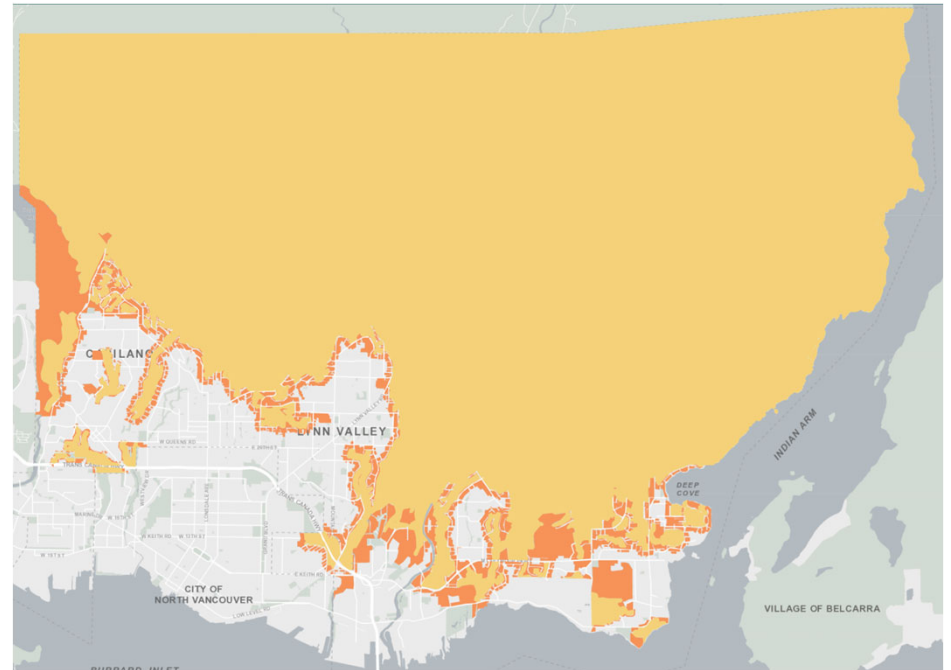
Creek Daylighting

- Argyle Secondary
- Nature-based solutions to restore ecological function



Community Wildfire Protection Plan

- 2007 Plan updated in 2020
 - 52 recommendations



Community Wildfire Protection Plan

1. Communication and education to minimize fire risk
2. Structure protection
3. Emergency response
4. Training
5. Fuel (vegetation) management

Increasing Forest Resilience: Fuel Treatments and Ecosystem Restoration

Pre-
planting
Nov
2013



Post –
planting
Oct 2014

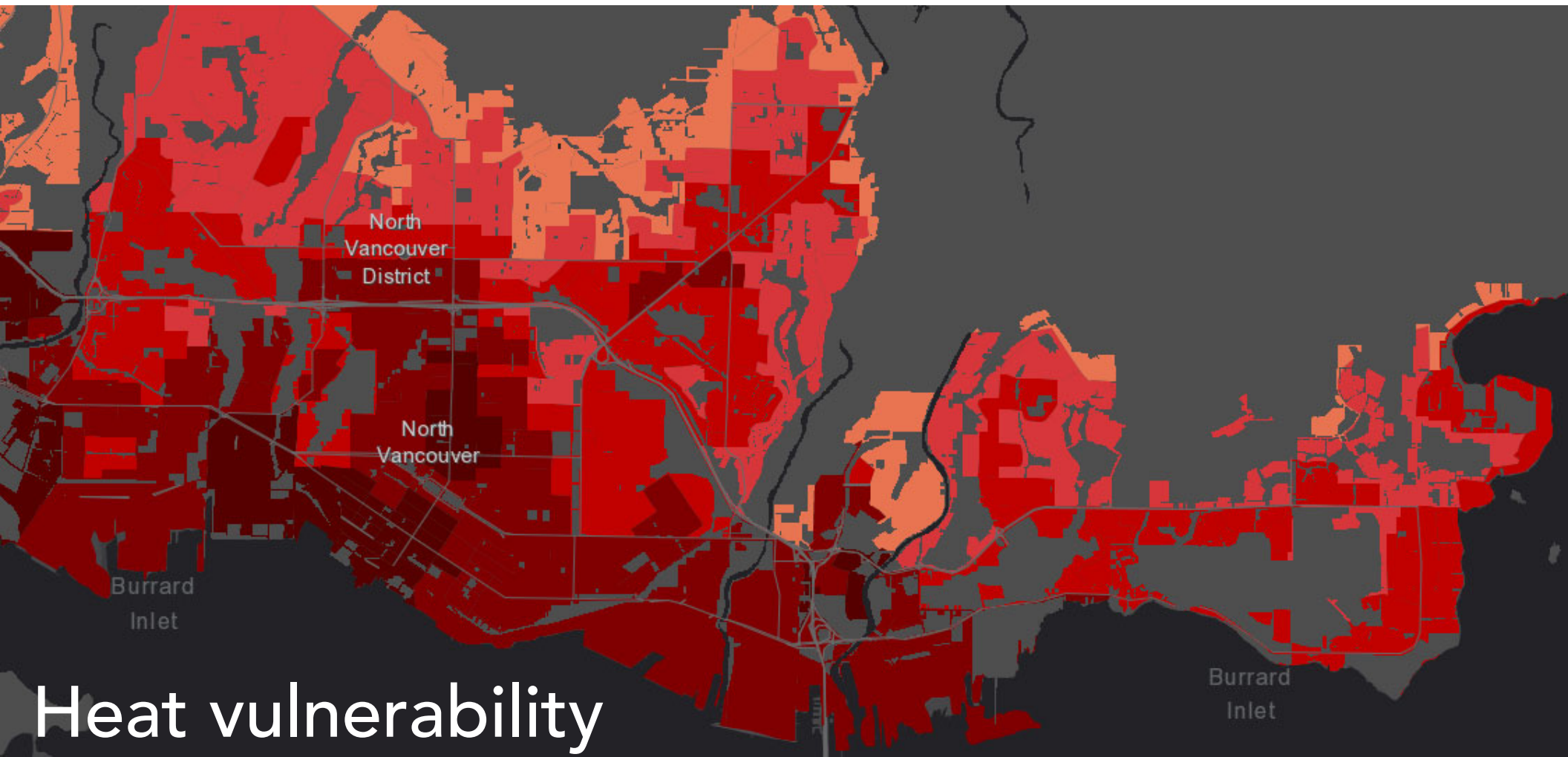


Post-
planting
May 2016



Post-
planting
May 2019

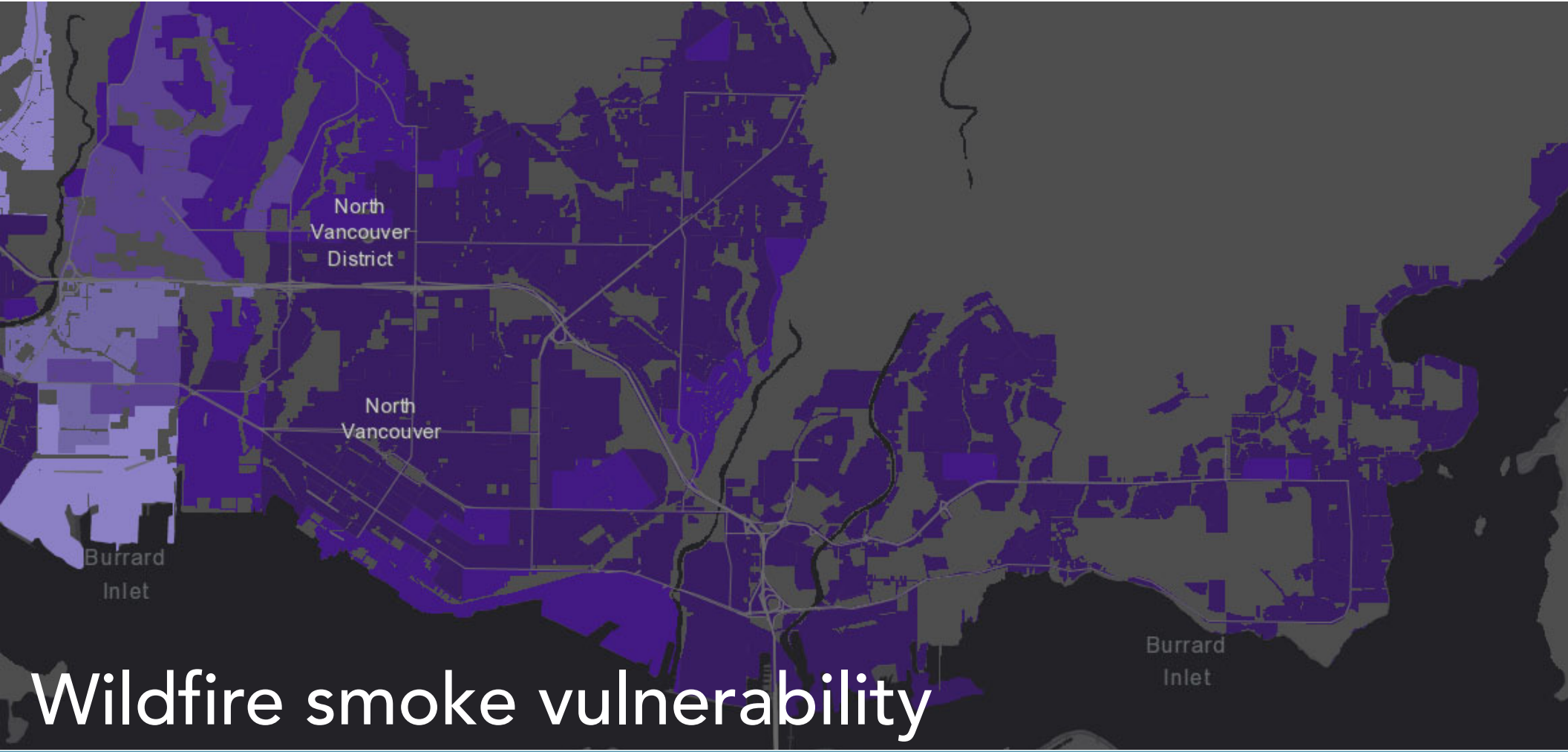




Heat vulnerability

Source: VCH Community Health and Climate Change Study, 2021





Wildfire smoke vulnerability

Source: VCH Community Health and Climate Change Study, 2021



Green Building Policy Development

- High efficiency filtration
- Cooling for residential dwelling units

North Shore Emergency Management (NSEM)

- Emergency Preparedness
- Community Resilience
- Extreme Heat Strategy



Urban tree canopy project



A scenic view of a forested stream with large rocks and a waterfall. The top half of the image shows a dense forest of evergreen trees on a steep, rocky slope. The bottom half shows a clear stream flowing over large, mossy rocks, with a small waterfall visible in the center. The overall scene is lush and green.

Thank you