

# Community Energy & Emissions Plan

PHASE 4 SURVEY RESPONSE SUMMARY

JANUARY 2019



# 2050

COMMUNITY ENERGY  
& EMISSIONS PLAN



# EXECUTIVE SUMMARY

This report summarizes the input received on the draft actions in the fourth phase (development of a draft plan) of the Community Energy and Emissions Plan (CEEP). The CEEP will serve to guide the actions we will take as a community to mitigate climate change by reducing our energy use and greenhouse gas emissions. Council directed staff to engage the public and gather input on the proposed actions.

Feedback was gathered through an online public survey, which was open for three weeks between September and October, 2018. In total, 152 completed survey responses were received.

## WHAT WE HEARD

The following points summarize the key results and themes of the feedback received through the online survey:

- actions to reduce transportation related emissions were the most important to respondents
- support was highest for the following actions in each category:
  - enhancing the transit experience (*Transportation and Land Use*)
  - improving new commercial building efficiency (*Buildings and Energy*)
  - expanding the organics and recycling programs (*Solid Waste*)
  - planting additional trees on active transportation routes (*Urban Forestry*)
- in the comments for each category, the most frequently mentioned themes were:
  - concerns about cost implications and cost-benefit ratio for some of the actions;
  - prioritize public transit improvements;
  - reduce waste at its source: excess packaging and single-use items;
  - make tree removal more difficult and incentivize tree preservation; and
  - reduce congestion and provide more, better transportation alternatives.

Overall, there was broad support for many of the proposed actions. All of the actions mentioned in the survey were supported or strongly supported by at least 60% of respondents. With half of the proposed actions (11 actions out of 22) supported or strongly supported by more than 75% of respondents.

# TABLE OF CONTENTS

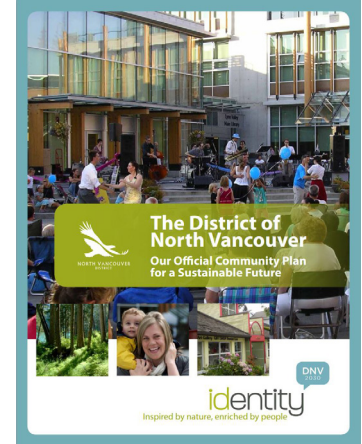
- 1.0 CONTEXT..... 1**
- 2.0 PROCESS ..... 2**
- 3.0 OPPORTUNITIES FOR INPUT ..... 2**
  - 3.1 ENGAGEMENT NOTIFICATION ..... 3
  - 3.2 ONLINE SURVEY ..... 3
- 4.0 WHAT WE HEARD..... 4**
  - 4.1 ONLINE SURVEY ..... 4
    - 4.1.1 Demographics..... 4
    - 4.1.2 Transportation and Land Use ..... 5
    - 4.1.3 Buildings and Energy ..... 8
    - 4.1.4 Solid Waste ..... 10
    - 4.1.5 Urban Forestry..... 12
    - 4.1.6 Final Thoughts..... 14
- 5.0 CONCLUSION ..... 14**
- 6.0 NEXT STEPS..... 15**

# 1.0 CONTEXT

One of the strategic directions of the District’s Official Community Plan (OCP) is to reduce the environmental footprint of our community. The target set out in the OCP is to reduce community greenhouse gas emissions by 33% by the year 2030. Once completed, the Community Energy and Emissions Plan (CEEP) will serve to guide the actions we will take as a community to reduce our energy use and greenhouse gas emissions.

The CEEP will focus on mitigating climate change at its source on a local scale, and will complement the District’s existing Climate Change Adaptation Strategy and (Corporate) Strategic Energy Management Plan.

Throughout the development of the CEEP, various stakeholder groups have been engaged. This report summarizes the feedback that was received from the public through the final round of consultation that occurred in fall 2018.



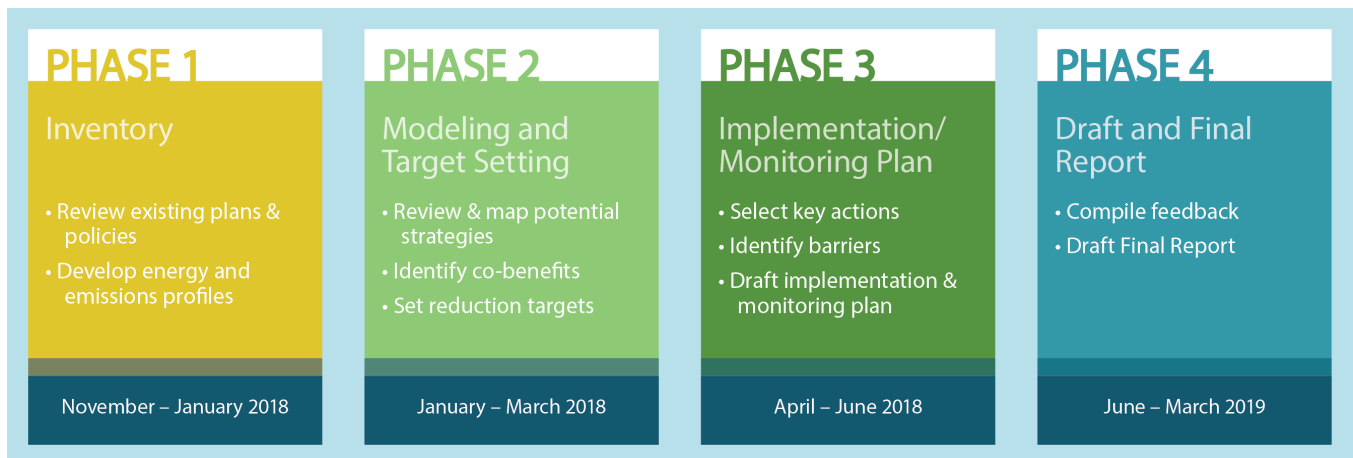
District of North Vancouver’s Official Community Plan



The District’s top four sources of carbon emissions

## 2.0 PROCESS

The community energy and emissions planning process began in November 2017, and included four phases, as shown below. This report summarizes the feedback received during the fourth and final phase of this process.



*The four phases of the community energy and emissions planning process*

## 3.0 OPPORTUNITIES FOR INPUT

Throughout the process of developing and refining the CEEP, there were opportunities for the public and stakeholders to provide feedback, including a public conversation to gather ideas.

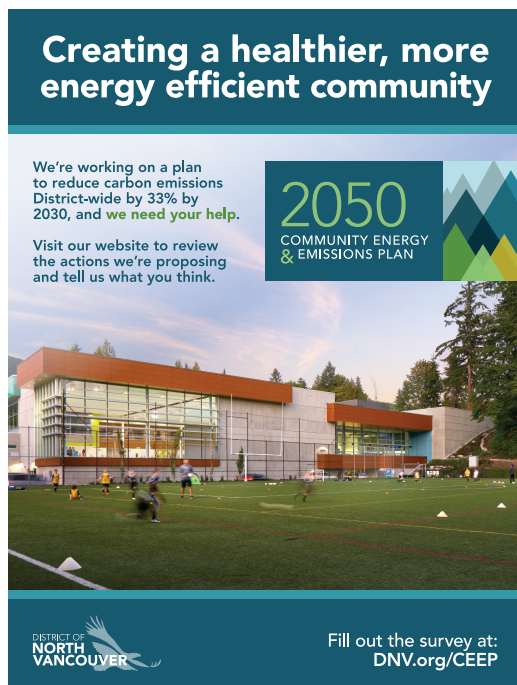
Engagement at prior stages included gathering feedback on key goals and action items at four key events at District Hall: a public information/idea generation session, a stakeholder workshop, and three Inter-Departmental Staff Committee workshops. A detailed summary of feedback collected in Phase 2 can be found at [DNV.org/CEEP](http://DNV.org/CEEP).

In the fourth and final phase of the process, the public was asked to provide feedback on proposed actions that, if implemented, would reduce our community's energy use and emissions. This feedback was gathered through an online public survey.

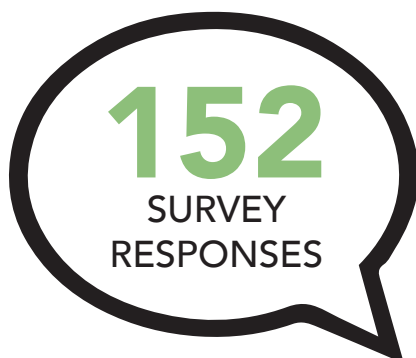


**Online Public Survey**

Public engagement can occur across a range of participation levels, from informing to empowering. Different levels of engagement are appropriate at different times and for different projects. The goal for this phase of engagement on the CEEP was to obtain public feedback on alternatives, which corresponds to the 'Consult' level on the International Association for Public Participation's (IAP2) Spectrum of Public Participation. This means that we will keep you informed, and listen to and acknowledge your concerns and aspirations in developing final solutions. We will also report back to you on how your input influenced the decision.



Poster advertising survey



### 3.1 ENGAGEMENT NOTIFICATION

We used several methods of communicating the opportunities for input, including:

- District's website (*DNV.org*) and social media (Facebook and Twitter);
- School District 44's social media (Facebook and Twitter);
- North Van Recreation & Culture website and social media (Facebook and Twitter); and
- North Vancouver District Public Library website and social media (Facebook and Twitter).

### 3.2 ONLINE SURVEY

The online survey asked for input on proposed actions to reduce energy use and emissions in the District of North Vancouver. It was open for three weeks on the District website, *DNV.org/CEEP*, from September 27, 2018 to October 19, 2018. In total, 152 survey responses were received.

## 4.0 WHAT WE HEARD

### 4.1 ONLINE SURVEY

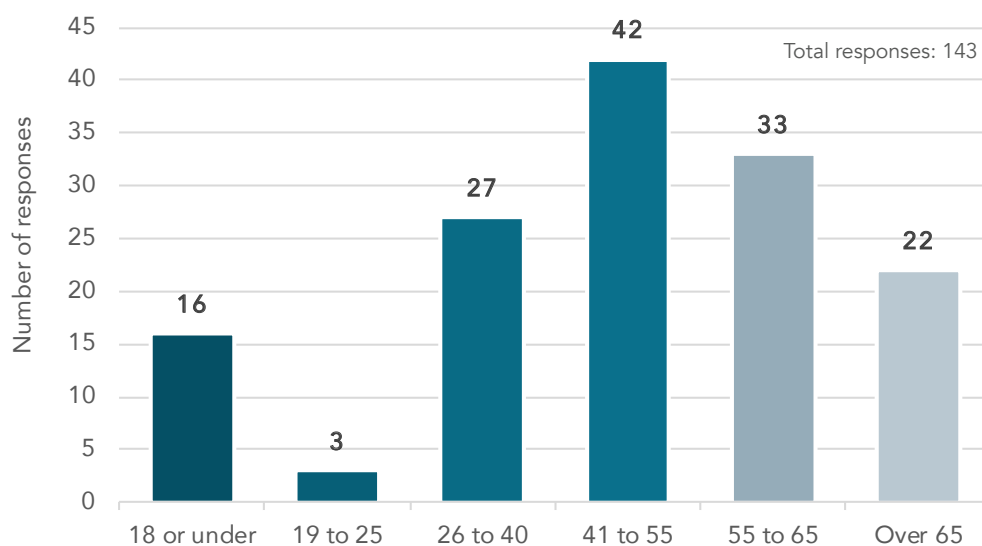
There were 152 respondents to the online survey. The number of responses to each question may vary because respondents may have chosen not to answer every question.

In the survey, background information was provided to give respondents context for each question. The background information for each question is summarized in this report, and accompanies each set of related questions.

#### 4.1.1 Demographics

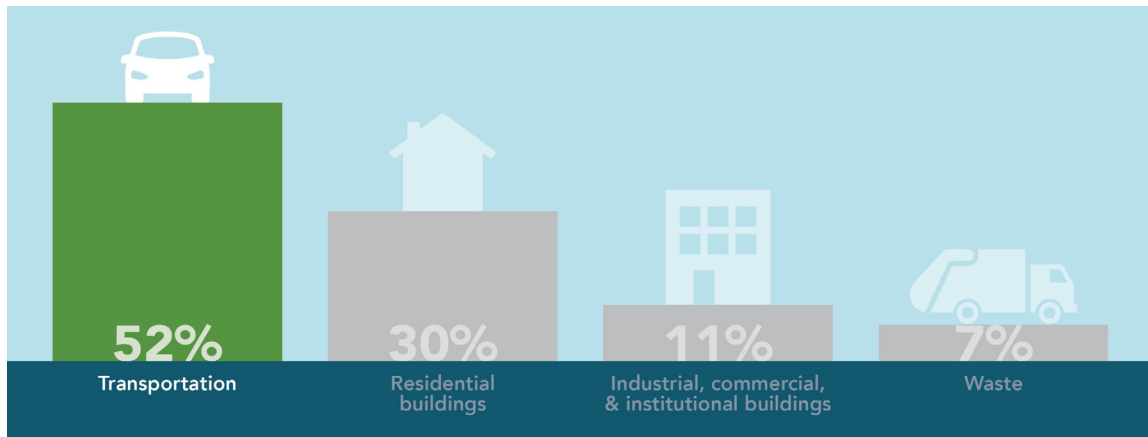
Survey respondents were from a range of age groups, with the highest percentage (29%) indicating they were between the ages of 41 to 55.

*Age distribution of survey respondents*



## 4.1.2 TRANSPORTATION AND LAND USE

Transportation accounts for more than 50% of our carbon emissions, making it a critical area for action. Taking action to reduce transportation related emissions also results in co-benefits such as increased health, reduced air pollution, safer streets for cyclists and pedestrians, and more vibrant communities.



### How important is this series of actions to you?

A total of 80% of respondents rated this series of actions as *important* (4) or *very important* (5). This set of actions was the most important set of actions to respondents.

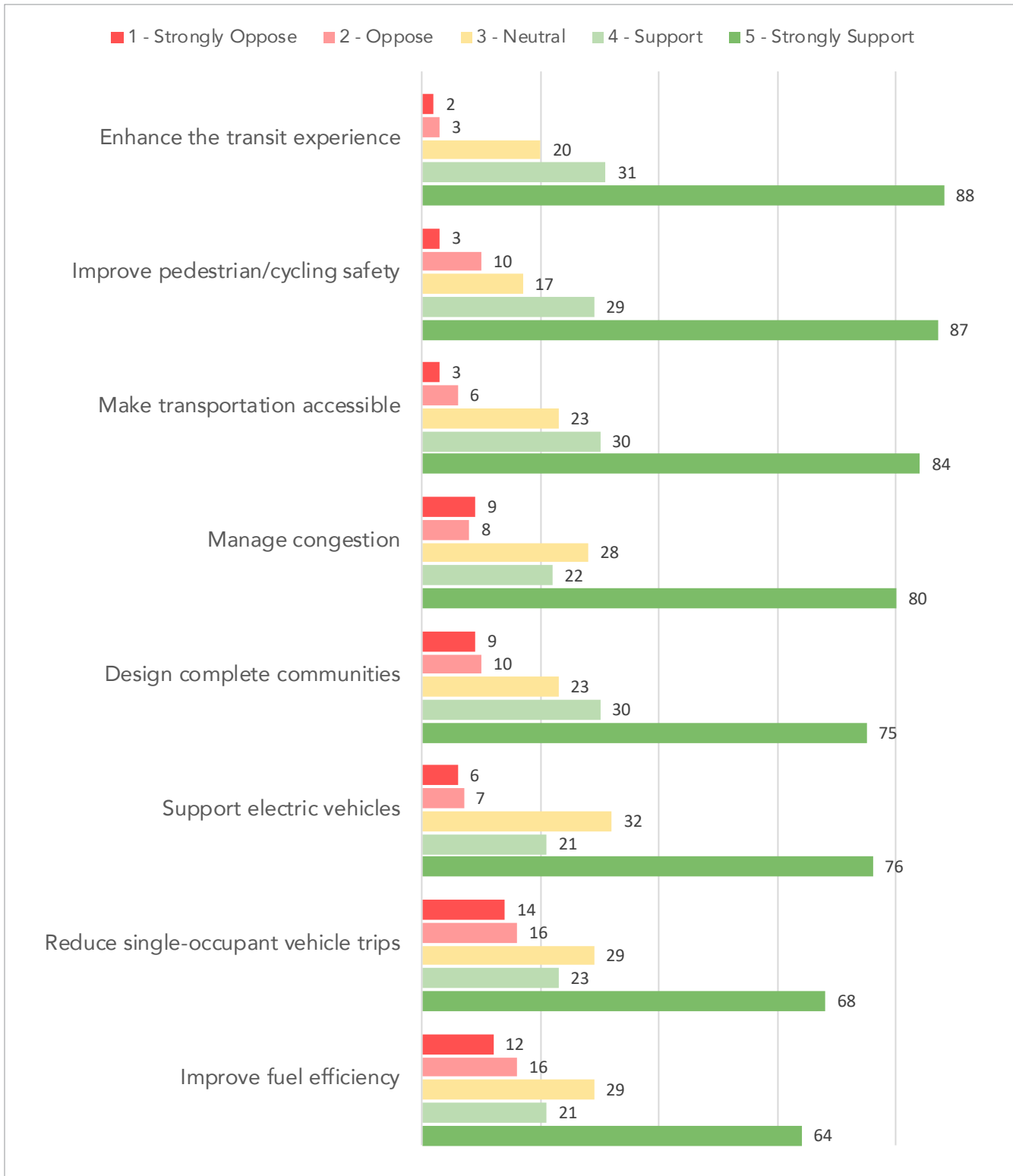
### What is your level of support for these actions?

Respondents ranked their level of support for each of the following actions. They are listed in order from most supported to least supported:

1. Enhance the transit experience (83% support or strongly support)
2. Improve pedestrian/cycling safety (79% support or strongly support)
3. Make transportation accessible (78% support or strongly support)
4. Design complete communities (71% support or strongly support)
5. Manage congestion (69% support or strongly support)
6. Support electric vehicles (68% support or strongly support)
7. Reduce single-occupant vehicle trips (61% support or strongly support)
8. Improve fuel efficiency (60% support or strongly support)



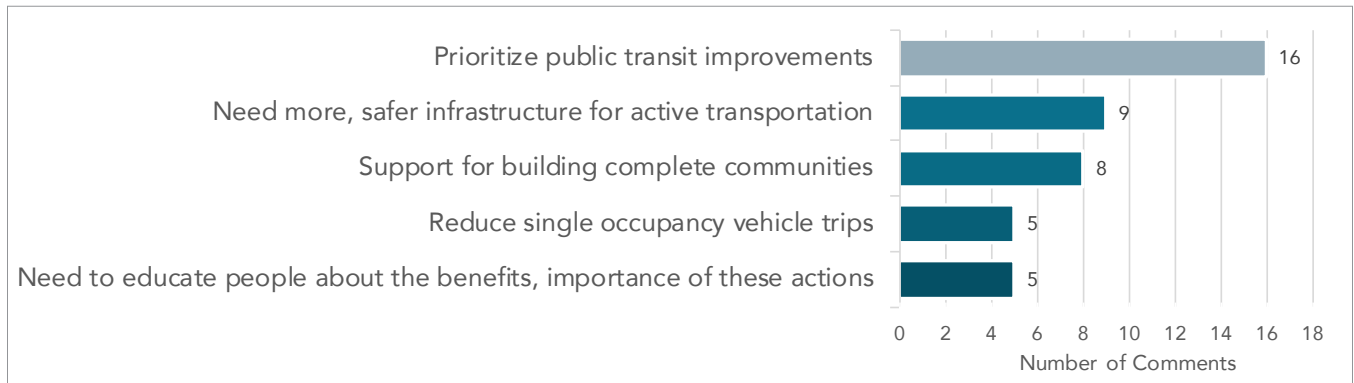
What is your level of support for these actions?



## Do you have any additional comments about these actions?

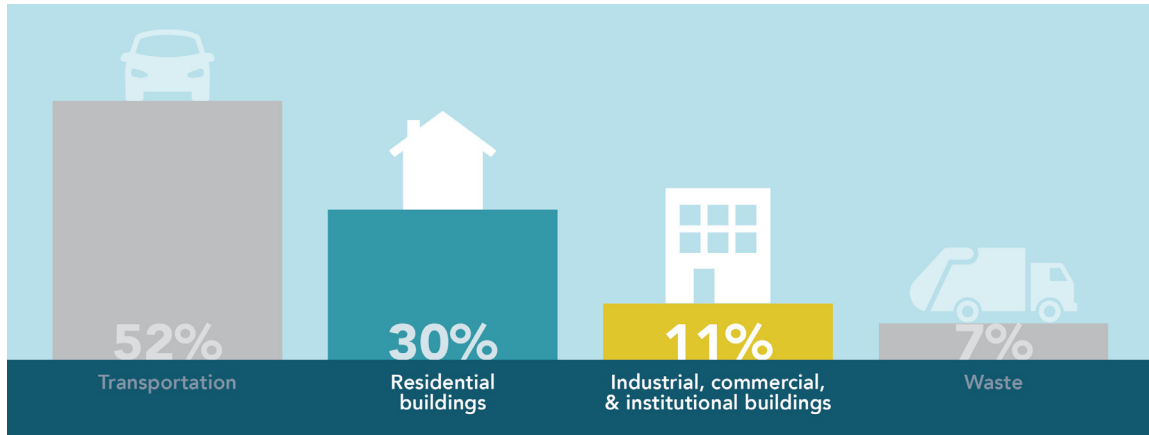
In total, 91 comments were received. The five most commonly mentioned themes were:

*Five most common themes for comments on the proposed actions related to transportation and land use*



### 4.1.3 BUILDINGS AND ENERGY

Energy use in residential, industrial, commercial, and institutional buildings accounts for more than 40% of carbon emissions, a large proportion of total carbon emissions in our community. Taking action to reduce energy use in buildings also results in co-benefits such as improved air quality, reduced risk of heat related health issues, and reduced heating costs.



#### How important is this series of actions to you?

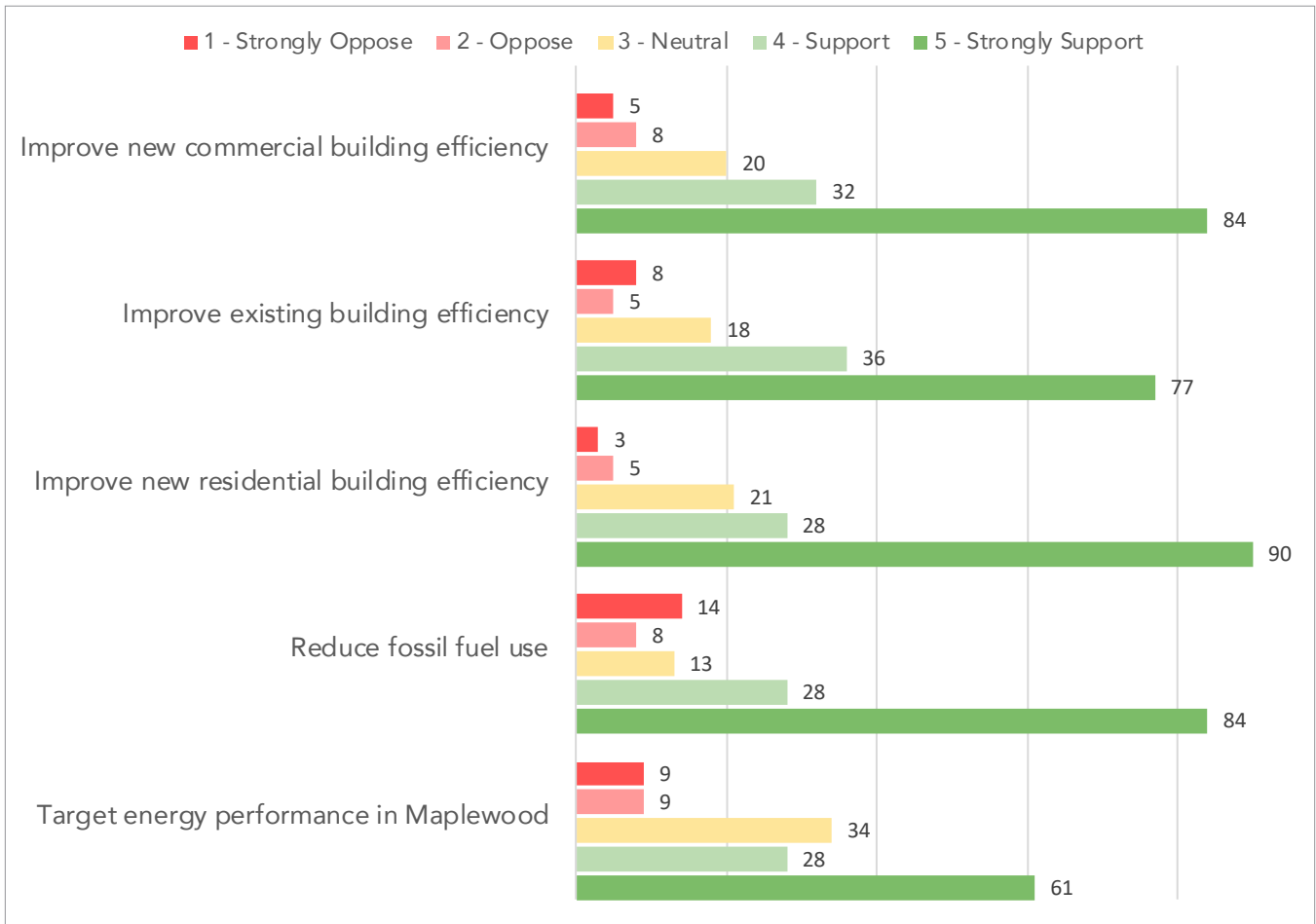
A total of 75% of respondents rated this series of actions as *important* (4) or *very important* (5). This set of actions was the second most important set of actions to respondents.

#### What is your level of support for these actions?

Respondents ranked their level of support for each of the following actions. They are listed in order from most supported to least supported:

1. Improve new commercial building efficiency (80% support or strongly support)
2. Improve existing building efficiency (78% support or strongly support)
3. Improve new residential building efficiency (77% support or strongly support)
4. Reduce fossil fuel use (76% support or strongly support)
5. Target energy performance in Maplewood (63% support or strongly support)

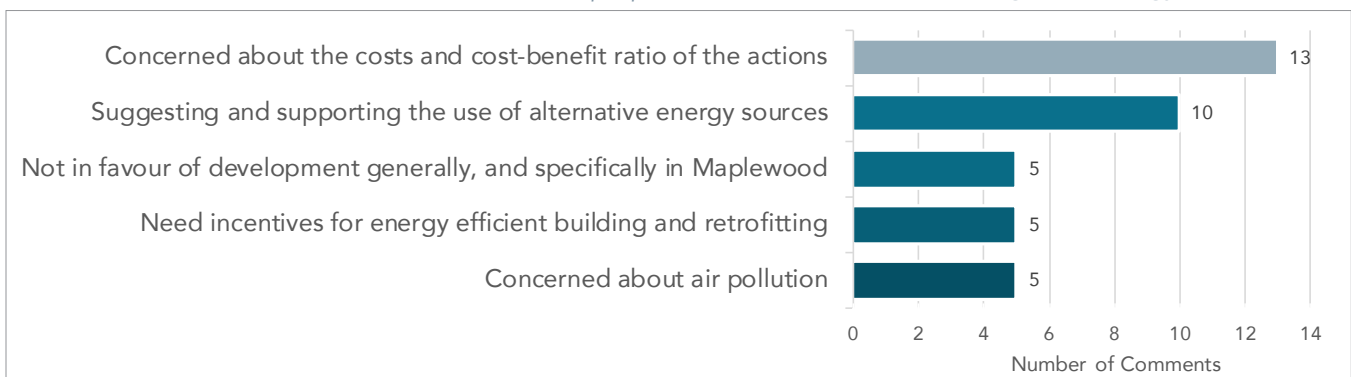
What is your level of support for these actions?



**Do you have any additional comments about these actions?**

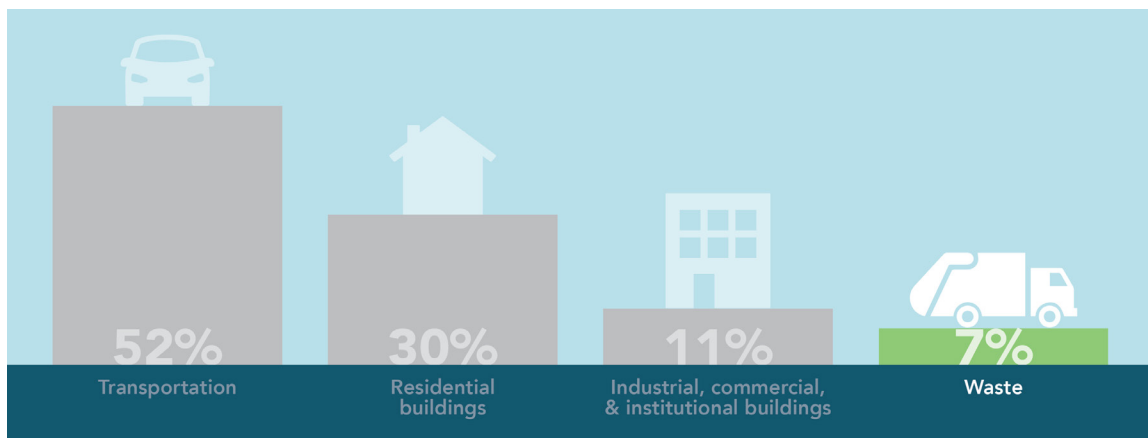
In total, 60 comments were received. The five most commonly mentioned themes were:

*Five most common themes for comments on the proposed actions related to buildings and energy*



#### 4.1.4 SOLID WASTE

Waste represents a small but significant portion of our community's carbon emissions. Energy is spent collecting and dealing with waste, and decomposing waste in our landfill is a significant source of methane; a powerful greenhouse gas. We can reduce emissions by reducing waste sent to the landfill and lowering the emissions generated from waste. Taking action to reduce waste also results in co-benefits such as a heightened sense of community pride, a greater sense of purpose among community members, and less time spent sorting waste.



#### How important is this series of actions to you?

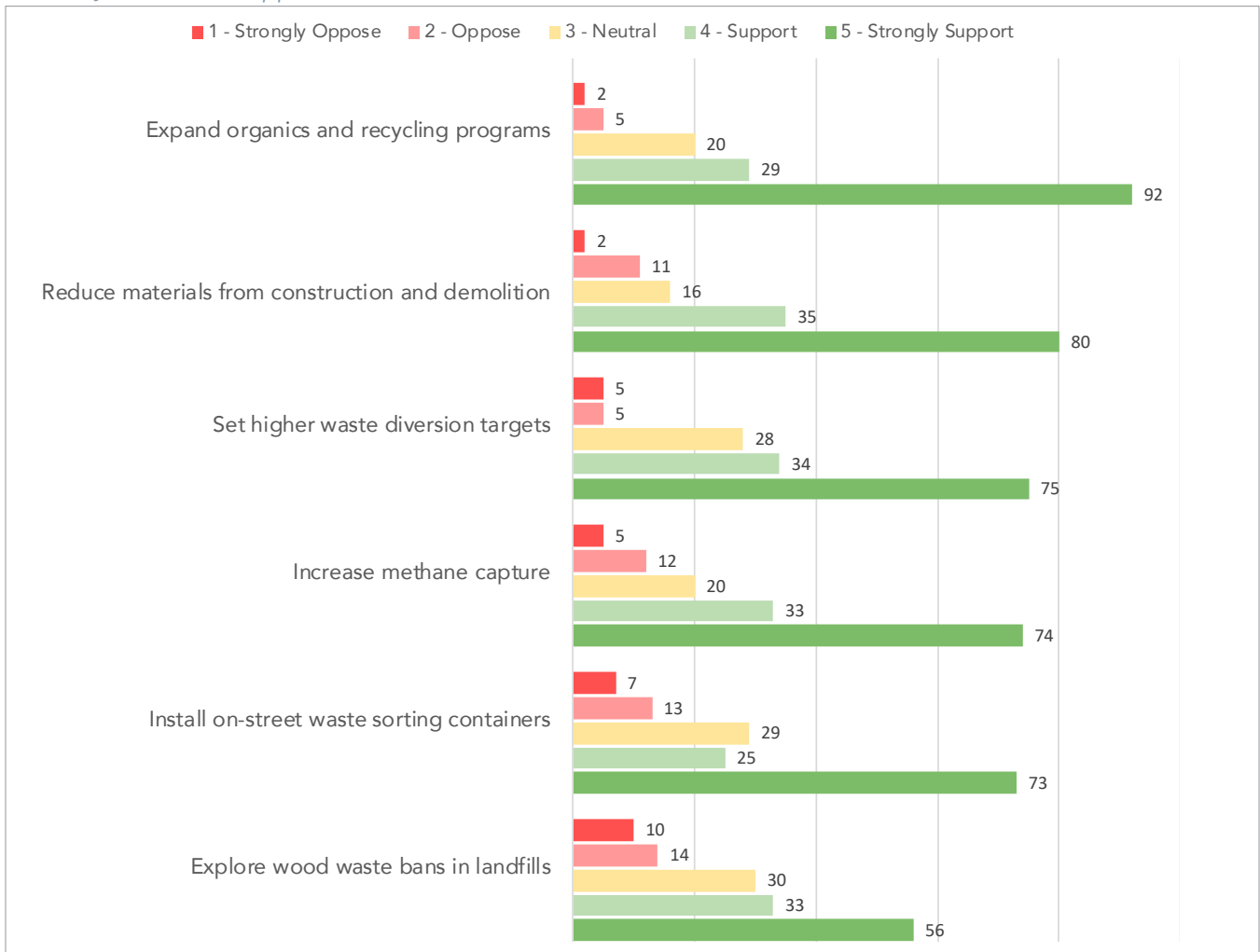
A total of 73% of respondents rated this series of actions as *important* (4) or *very important* (5). This set of actions was rated the same level of importance as those related to Urban Forestry.

#### What is your level of support for these actions?

Respondents ranked their level of support for each of the following actions. They are listed in order from most supported to least supported:

1. Expand organics and recycling programs (82% support or strongly support)
2. Reduce materials from construction and demolition (80% support or strongly support)
3. Set higher waste diversion targets (74% support or strongly support)
4. Increase methane capture (74% support or strongly support)
5. Install on-street waste sorting containers (67% support or strongly support)
6. Explore wood waste bans in landfills (62% support or strongly support)

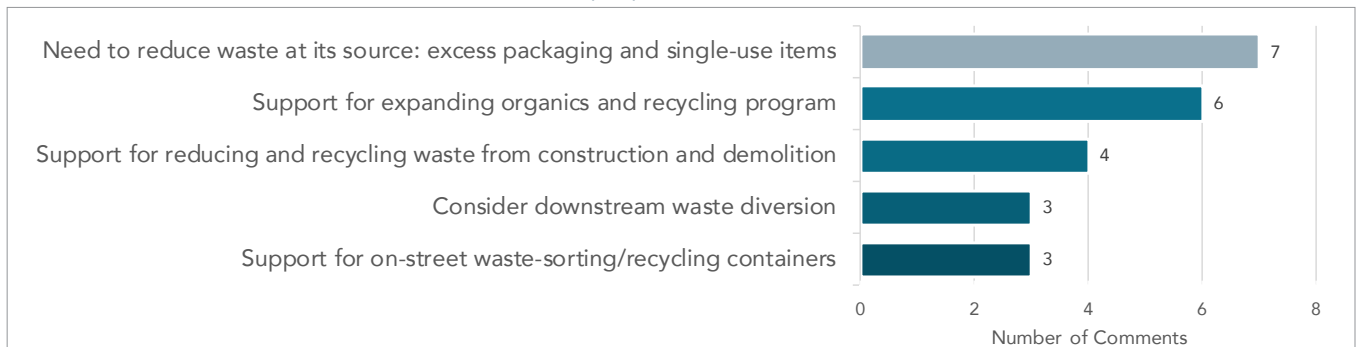
What is your level of support for these actions?



**Do you have any additional comments about these actions?**

In total, 31 comments were received. The five most commonly mentioned themes were:

*Five most common themes for comments on the proposed actions related to solid waste*



## 4.1.5 URBAN FORESTRY

The urban tree canopy provides numerous benefits, including reducing both energy use and emissions. Planting trees can help to sequester carbon out of the atmosphere, and can help to reduce energy consumption in buildings by providing a source of shade in the hot summer months. By expanding our urban forests, we can further reduce our energy use and emissions. Expanding our urban forests also provides co-benefits such as a calmer, quieter urban setting, improved overall mental health, and protection from flooding during storms.

### How important is this series of actions to you?

A total of 73% of respondents rated this series of actions as *important (4)* or *very important (5)*. This set of actions was rated the same level of importance as those related to Solid Waste.

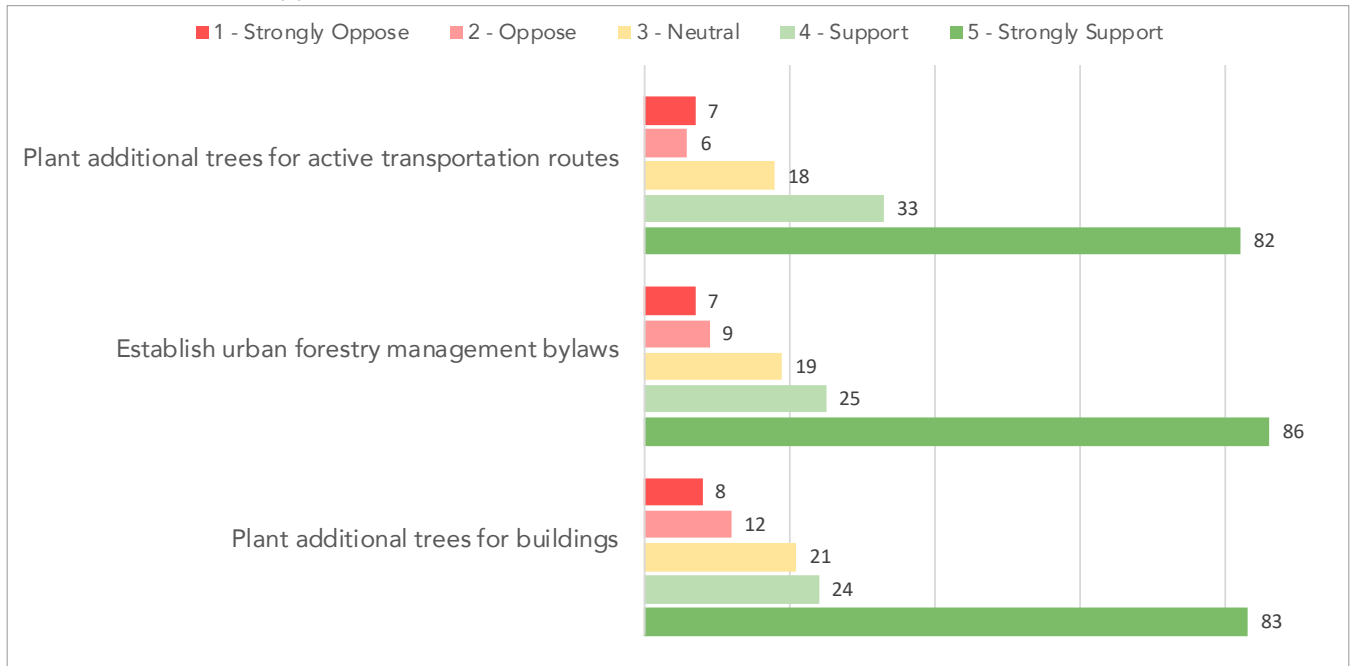
### What is your level of support for these actions?

Respondents ranked their level of support for each of the following actions. They are listed in order from most supported to least supported:

1. Plant additional trees for active transportation routes (79% support or strongly support)
2. Establish urban forestry management bylaws (76% support or strongly support)
3. Plant additional trees for buildings (72% support or strongly support)



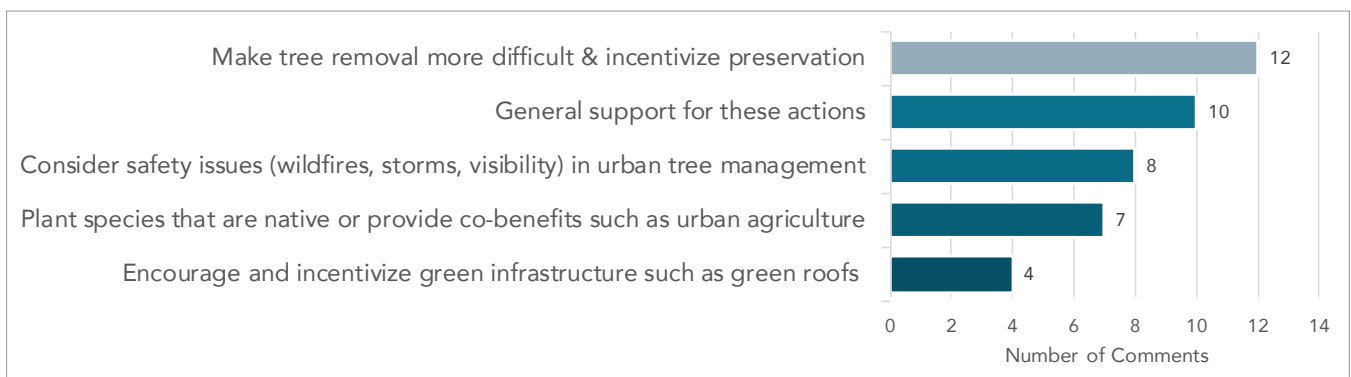
What is your level of support for these actions?



### Do you have any additional comments about these actions?

In total, 61 comments were received. The five most commonly mentioned themes were:

Five most common themes for comments on the proposed actions related to urban forestry

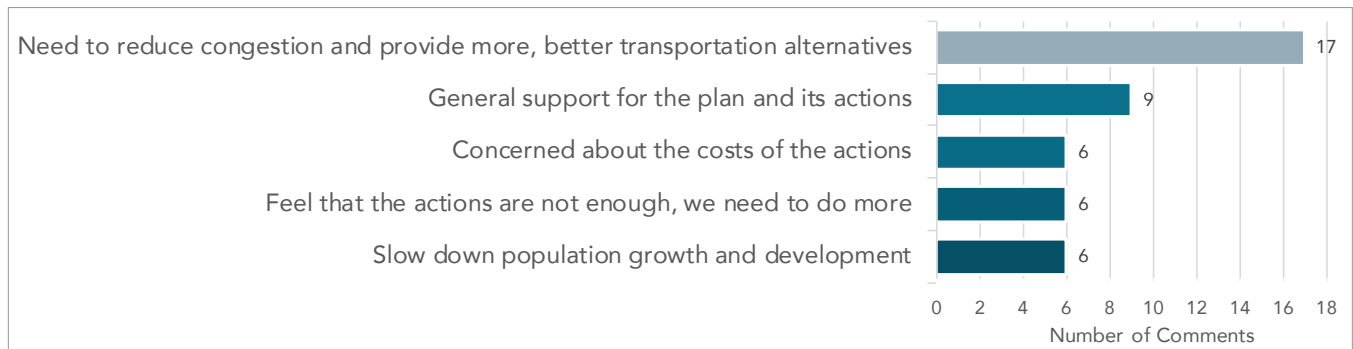




## 4.1.6 FINAL THOUGHTS

Respondents were asked to provide any final thoughts about the CEEP or climate action in the District. In total, 77 comments were received. The five most commonly mentioned themes were:

*Five most common themes for respondents' final comments*



## 5.0 CONCLUSION

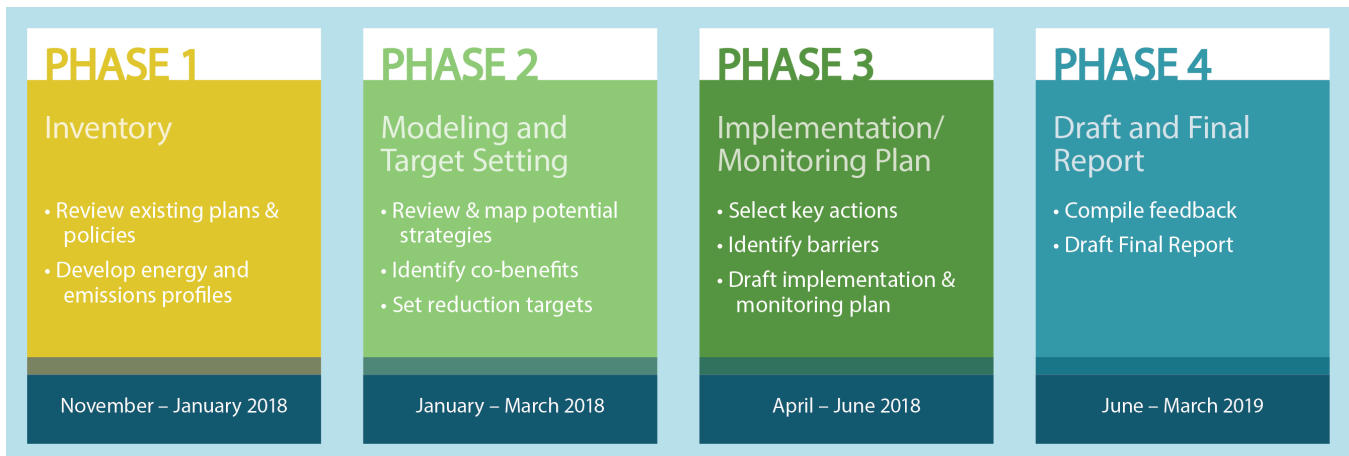
Feedback on the proposed actions was gathered through an online public survey. The following points summarize the key results and themes of the feedback received:

- actions to reduce transportation related emissions were the most important to respondents
- support was highest for the following actions in each category:
  - enhancing the transit experience (*Transportation and Land Use*)
  - improving new commercial building efficiency (*Buildings and Energy*)
  - expanding the organics and recycling programs (*Solid Waste*)
  - planting additional trees on active transportation routes (*Urban Forestry*)
- in the comments for each category, the most frequently mentioned themes were:
  - concerns about cost implications and cost-benefit ratio for some of the actions;
  - prioritize public transit improvements;
  - reduce waste at its source: excess packaging and single-use items;
  - make tree removal more difficult and incentivize tree preservation; and
  - reduce congestion and provide more, better transportation alternatives.

Overall, there was broad support for many of the proposed actions. All of the actions mentioned in the survey were supported or strongly supported by at least 60% of respondents. With half of the proposed actions (11 actions out of 22) supported or strongly supported by more than 75% of respondents.

## 6.0 NEXT STEPS

This report will be shared with Council. The input received will be used to inform the final version of the CEEP, which is expected to go before Council in spring of 2019.





355 West Queens Road  
North Vancouver, BC  
V7N 4N5

604-990-2311  
[DNV.org/CEEP](http://DNV.org/CEEP)



[NVanDistrict](https://www.facebook.com/NVanDistrict)



[@NVanDistrict](https://twitter.com/NVanDistrict)