

**The Corporation of the District of North Vancouver**

**Bylaw 8381**

A bylaw to remove park dedication

---

The Council for The Corporation of the District of North Vancouver enacts as follows:

**Citation**

1. This bylaw may be cited as "Park Dedication Removal Bylaw 8381, 2019".

**Dedication Removal**

2. The dedication for park purposes, as set out in Bylaw 6338 "Lynn Canyon Park Dedication Bylaw", of the portions of Lynn Canyon Park as shown on EPP83265 and EPP 83266 attached hereto as Schedules A and B comprising a total of 0.32 ha (3,237m<sup>2</sup>) as shown outlined in bold on the plans attached is hereby removed.

**READ** a first time April 1<sup>st</sup>, 2019

**READ** a second time April 1<sup>st</sup>, 2019

**READ** a third time April 1<sup>st</sup>, 2019

**APPROVAL OF THE ELECTORS OBTAINED** on May 15<sup>th</sup>, 2019

**ADOPTED** May 27<sup>th</sup>, 2019

\_\_\_\_\_  
Mayor



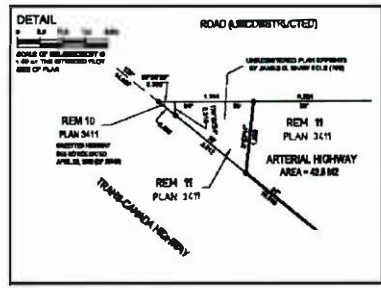
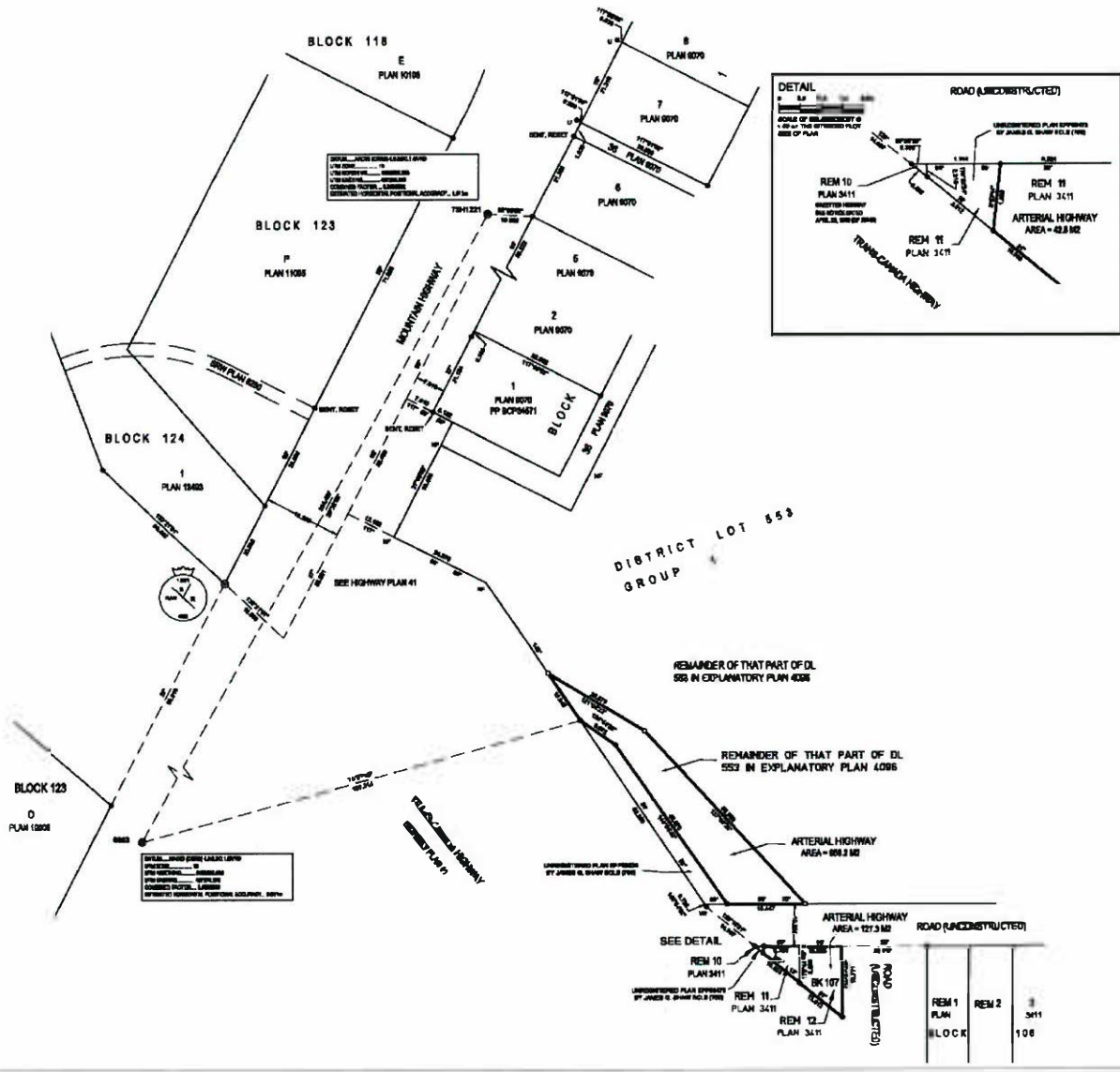
\_\_\_\_\_  
3/ *Hinda Bruch*  
Municipal Clerk

Certified a true copy

\_\_\_\_\_  
Municipal Clerk

# Schedule A to Bylaw 8381

PLAN EPP83265



REFERENCE PLAN OF:  
PART OF THAT PART OF DISTRICT LOT 563 IN  
EXPLANATORY PLAN 4098 EXCEPT:  
(1) PART IN PLAN 9070  
(2) PART IN HIGHWAY PLAN 41;  
LOTS 11 AND 12 PLAN 3411 EXCEPT PART ON  
HIGHWAY PLAN 41, BLOCK 107, DISTRICT LOT  
563;  
ALL OF GROUP 1, NEW WESTMINSTER  
DISTRICT.

PURSUANT TO SECTION 107 OF THE LAND TITLE ACT:  
BOOK 8262 2296

THE REFERRED PLAN OF THIS PLAN IS 900 M BY 1200 M APPROXIMATELY. IT IS A PLAN OF 1/400 SCALE OF 1:2500.

ADJACENT SURVEY AREA No. 19 DISTRICT OF NORTH VANCOUVER  
PLANNED UNDER R.S. 2014 2910

**LEGEND:**

SYMBOL	DESCRIPTION
(Symbol)	INTERNAL SUBDIVISION
(Symbol)	EXTERNAL SUBDIVISION
(Symbol)	UNDEVELOPED AREA
(Symbol)	DEVELOPED GREEN FIELDS
(Symbol)	DEVELOPED GREEN WILDERNESS
(Symbol)	DEVELOPED FARM
(Symbol)	DEVELOPED BUSINESS
(Symbol)	DEVELOPED BLOCK

THIS PLAN AND THE REFERRED PLAN ARE SUBJECT TO THE CONTROL OF THE METRO VANCOUVER DISTRICT AND ALL BYLAWS AND ORDINANCES THEREUNDER AND TO THE CONTROL OF THE CITY OF VANCOUVER.

THE PLAN IS SUBJECT TO THE CONTROL OF THE METRO VANCOUVER DISTRICT AND ALL BYLAWS AND ORDINANCES THEREUNDER AND TO THE CONTROL OF THE CITY OF VANCOUVER.

THIS PLAN IS SUBJECT TO THE CONTROL OF THE METRO VANCOUVER DISTRICT AND ALL BYLAWS AND ORDINANCES THEREUNDER AND TO THE CONTROL OF THE CITY OF VANCOUVER.

REFERENCE	BOOK	PAGE	DESCRIPTION
PLAN 4098 EXCEPT PART IN PLAN 9070 EXCEPT PART IN HIGHWAY PLAN 41	19	107	SEE REFERENCE PLAN 4098 EXCEPT PART IN PLAN 9070 EXCEPT PART IN HIGHWAY PLAN 41
LOT 11 EXCEPT PART ON HIGHWAY PLAN 41, BLOCK 107, DISTRICT LOT 563	19	107	SEE REFERENCE PLAN 4098 EXCEPT PART IN PLAN 9070 EXCEPT PART IN HIGHWAY PLAN 41, BLOCK 107, DISTRICT LOT 563
LOT 12 EXCEPT PART ON HIGHWAY PLAN 41, BLOCK 107, DISTRICT LOT 563	19	107	SEE REFERENCE PLAN 4098 EXCEPT PART IN PLAN 9070 EXCEPT PART IN HIGHWAY PLAN 41, BLOCK 107, DISTRICT LOT 563

PLAN	BLOCK	LOT
REM 1	106	3411
REM 2	106	3411

THIS PLAN IS SUBJECT TO THE CONTROL OF THE METRO VANCOUVER DISTRICT AND ALL BYLAWS AND ORDINANCES THEREUNDER AND TO THE CONTROL OF THE CITY OF VANCOUVER.

THE PLAN IS SUBJECT TO THE CONTROL OF THE METRO VANCOUVER DISTRICT AND ALL BYLAWS AND ORDINANCES THEREUNDER AND TO THE CONTROL OF THE CITY OF VANCOUVER.

