

1326 - 1336 MAIN STREET

Flex warehouse / office premises available for lease in Lynnmour South. These high exposure units are in the heart of the busy Main St. commercial corridor close to Park and Tilford Shopping Centre, Harbour Front Centre (Canadian Tire, VanCity, Michaels, Tim Hortons) and just minutes away from Hwy 1 and the Ironworkers Memorial Bridge. The units range in size from 1,449 sq ft to 1,998 sq ft, and 2 units may be combined for a contiguous area of up to 3,662 sq.ft. Parking is available behind the building off Lynn Ave.

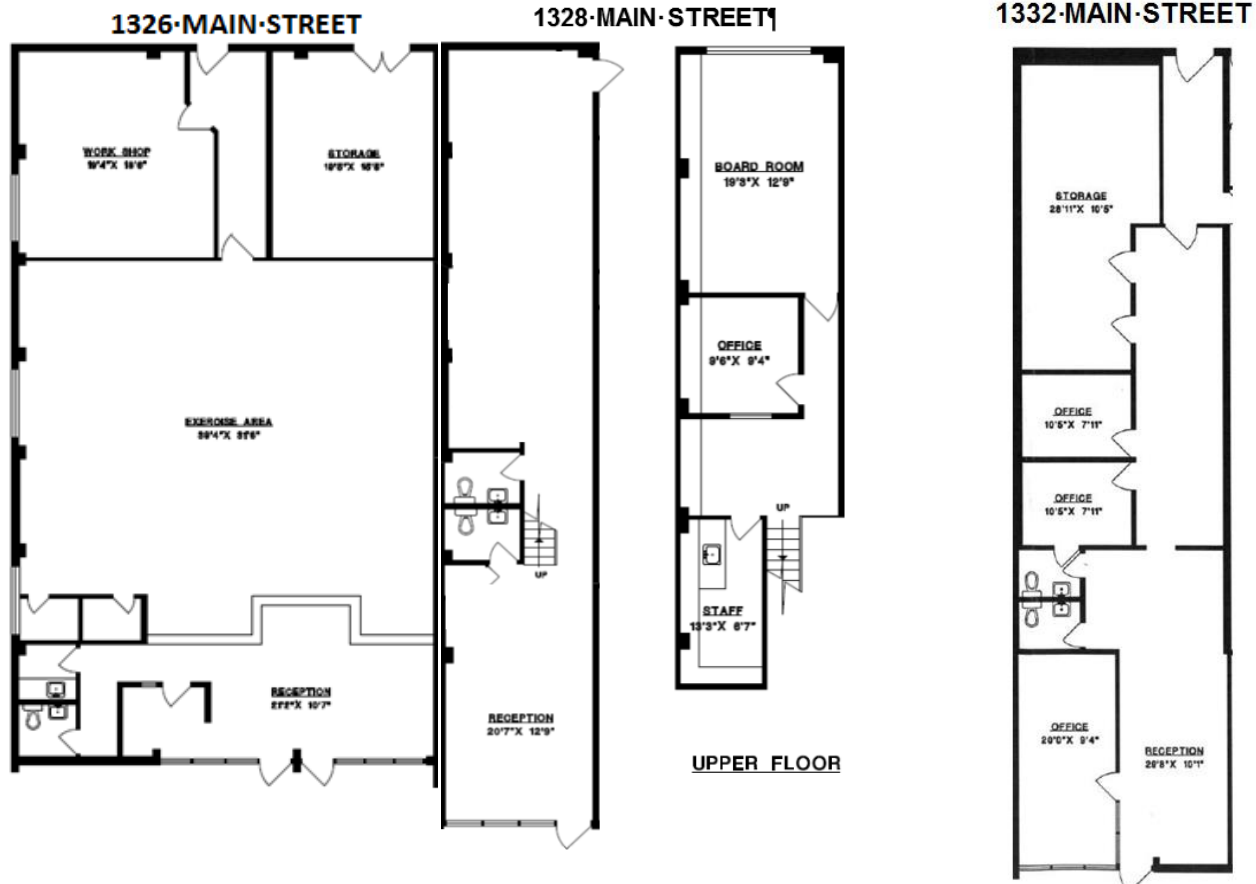


If you are interested in leasing space in this building, please contact:

Ryan P. Malcolm
Manager, Real Estate & Properties
District of North Vancouver
Phone: 604 990-2262
Email: rmalcolm@dnv.org



FLOOR PLANS



Approximate square footage:

1326 Main Street – 1,988 sq. ft.

1328 Main Street – 1,550 sq. ft.

1332 Main Street – 1,449 sq. ft.